

# EAGLES EDITION



## Principal's Message

Hello Eagles,

There are only a few weeks of school left. As we wrap up the school year parent(s)/guardian(s) will receive more information in the coming weeks regarding eighth grade promotion and our senior graduation. We are finishing the final touches of our planning. I am looking forward to celebrating these milestones with our students and families.

Here are a few reminders:

- With the increased outside temperatures please remind your student(s) to follow the dress code policy. Students who are not dressed appropriately will be asked to change clothes. Adhering to the dress code standards minimizes disruption and/distraction in the classroom.
- We are starting to see and uptick with tardies. It is important to make sure your student(s) arrive at school on time.
- Finally, please continue to encourage your student(s) to bring their digital devices fully charged for each day of school. Let's finish the school year strong!

Have a great weekend Eagles!

Warm Regards,  
Dr. Jennifer Murphy



# QUICK REFERENCES

## Page Jumps

**New Feature:**

Click the topic you want and jump straight to that page

[Calendar](#)

[Athletic Department](#)

[International Baccalaureate](#)

[PTN](#)

**New**

[PROM](#)

**New**

[Medicine Pick-up](#)

[One Small Step Fundraiser](#)

[Handicapped Parking](#)

[Yearbook](#)

**Next  
Week**

[ASU Summer Programs](#)

[Senior Reminders](#)

[FAFSA](#)

[Health Office News](#)

[Job Opportunities](#)

## Helpful Links

[Gilbert's Parents  
Resource Page](#)



[7th-12th  
School Calendar](#)

[7th-12th  
Events Calendar](#)



[Friday A/B  
Schedule](#)

[7th-8th Bell  
Schedule](#)

[9th-12th  
Bell Schedule](#)

[Website](#)

[Facebook](#)

[PTN  
Website](#)

[PTN  
Facebook](#)

# CALENDAR

## *This Month*

### MAY

**4th: Junior & Senior Prom**

**6th-10th: Teacher Appreciation Week**

**9th: Eagle Expo**

5:00-6:30PM

**23rd: 8th grade promotion**

8:00AM

**23rd: Last Day of School**

Early Release

**23rd: Senior Walk**

10:30AM

**23rd: Senior Graduation**

5:00PM

## *Next Month*

### JULY

**19th: Eagle Day**

**23rd: First Day of School**

Click [HERE](#) to see the  
24-25 school year calendar

[Back to Main Menu](#)

# ATHLETIC DEPARTMENT

Please check [AZCAAPREPS.COM](http://AZCAAPREPS.COM) regularly for up-to-the-minute game schedule and locations.

ALL athletic fees need to be paid by the first game. Unpaid fees can lead to not playing in games. All paperwork should be in for all sports at this time. Please verify with your coach to be sure all your paperwork is turned in.

## This is the schedule for April 29 - May 3

### Jr High Boys Basketball GAMES:

Monday (4/29) vs Legacy Gilbert in B4 @ 4:30 pm

Wednesday (5/1) @ Ben Franklin Gilbert @4:00pm (LAST GAME)

### Jr High Boys Basketball Practice:

Tuesday/Thursday 3:30-5:00 in B3

### Elementary Boys Basketball GAMES:

Monday (4/29) @ BASIS Mesa @ 5:00pm (LAST GAME)

### Girls Varsity Flag Football PLAYOFFS:

Saturday (5/4) @ ASU West Campus Field 2 Vs TBD @ 6:15 PM

Championship Game (5/4) (if we win) @ ASU West Campus Field 1 Vs TBD @ 7:45 PM



Proud Sponsors of  
**EDUPRIZE Athletics**

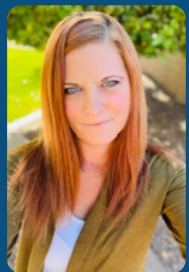
You can find all forms listed [HERE](#):

Make sure you bring proper attire and plenty of water to practice!

Let's have another great sports season!

If you have any questions please email the Athletic Director  
[Clint.ambos@eduprizeschools.net](mailto:Clint.ambos@eduprizeschools.net)

[Back to Main Menu](#)



Amy Smith  
IB Director

**IB Testing:** IB exams begin at EDUPRIZE on May 1st, with IB Math. These exams will take place between May 1st and finishing on May 24th with AP Statistics. Students will not test everyday during this time, but they will need to be studying for their next exam throughout the portion of this time. Parents, please encourage kids to keep working, even when they feel overwhelmed and feel free to quiz them at home. This is a really tough time for IB students (especially seniors), so giving them words of encouragement and expressing your pride really goes a long way.

**IB ELA SL:** As previously mentioned, ALL incoming juniors will take IB SL instead of the previously taught English course. One teacher described this as “rebranding” without too much of a change. Students will still be utilizing MyPerspectives along with reading 4 texts over a two year period. Teachers will incorporate the IB Learner Profile along with IB Standards and Practices to ensure that the needs of ALL students are being met. Then, at the end of their senior year, students can choose to take the IB exam for a chance at college credit—stay tuned for more information as that time gets closer. If you’d like more information about this initiative and how other schools are doing this, feel free to visit this website <https://ibo.org/programmes/diploma-programme/adopt-dp-courses-school-wide/>

Have a great weekend,  
Amy Smith  
DP Coordinator

[Back to Main Menu](#)



# P T N notes

## EVENTS:

**\*\*** ALL of these events are ONLY made possible by having volunteers. Please please reach out to us at [ptn@eduprizeschools.net](mailto:ptn@eduprizeschools.net) to help.

**Teacher Appreciation Week** – Help us spoil teachers and show them love during teacher appreciation week. Use this [link](#) to sign-up!



**Yearbook** – The yearbook committee needs photographs of special events & sports games for Kinder through 6th grade. If you have great photographs, please email them to [eduprizeyearbookchair@gmail.com](mailto:eduprizeyearbookchair@gmail.com) for a chance to have them featured in the yearbook!

Did you know you can earn money for Eduprize simply by shopping at Fry's?

Just link your Fry's Rewards card online with Eduprize.

Go to: [www.fryscommunityrewards.com](http://www.fryscommunityrewards.com) & sign in.

Then click Community Rewards and find your organization (Edu-Prize Parent Teacher Organization) or enter our number: HM079.

If you are interested in getting involved with PTN and volunteering at school events, please emails us at [ptn@eduprizeschools.net](mailto:ptn@eduprizeschools.net)

**Back to Main Menu**



# Prom Tickets

May 4th

7:00pm - 10:00pm



\$35 for One

\$60 for Two

See Mrs. Aguilera in  
Room 351 to purchase

\* Guest Passes Available \*

[Back to Main Menu](#)



# MEDICATION PICK UP NOTICE FOR END OF YEAR

Dear Parent or Guardian,

If your student has prescription or over the counter medication in the health office, please pick it up on or before the last day of school May 23, 2024. ALL medications must be picked up by an adult.

ALL medication will need to be picked up from building 1. (Building 3 health offices will not be open). Health office hours in building 1 are 7:15 am -3:45 pm.

**All medication that is not picked up  
by 3:45 pm on May 23rd will be discarded.**



Thank you for your cooperation,  
Eduprize Nursing Staff  
(480) 813-9537 ext 1070

[Back to Main Menu](#)



# ONE SMALL STEP FUNDRAISER

**~Donate to people in need today!~**



**New  
Socks!**



**Hygiene  
Products!**

**~Collecting Items April 26th-May 3rd! ~**

One Small Step's mission is to provide clothing/hygiene relief to those who can not afford to buy the things they need.



**One  
Small  
Step**

[Back to Main Menu](#)

Boxes will be at the front desk of B1 and B2 to drop off items in!



# HANDICAPPED PARKING

Please remember we have students at our school who require the handicapped parking spots to get in and out of their parent's cars.

- Do NOT use the superintendent parking spot, even for quick drop offs.
- Only those who have parking passes to allow handicapped parking may park in those designated areas.
- Please be aware that some cars parked in the handicapped spots require wheelchair ramps to get their child in and out of the car. Please be courteous around those parked cars to allow space and drive slowly.
- No cars should be in the loading zone area at any time.

Thank you for your help to keep our students and families safe. We know drop off/pick up times can get crazy and appreciate you adhering to this rules.



[Back to Main Menu](#)

**DON'T MISS OUT**

**★ 2024 ★**  
**YEARBOOK**

**Order by 4/20 to have  
it delivered before the  
school year is over**

**treering.comPassCode=  
1016046167991742**



**Back to Main Menu**





[LeadAZ.org/summer](http://LeadAZ.org/summer)



# Logic, Leadership, & Life Skills Summer Programs @ ASU

Tempe  
Polytechnic  
West

\$25 Off  
With Code:  
**OUTREACH**

**\$350**

Social  
Networking

Team  
Building

Goal  
Setting

Stress  
Management

[Back to Main Menu](#)

Over **88%** of parents say this program  
**changed their teen's life in just 1 week!**

Leadership Society of Arizona  
Team@LeadAZ.org  
480-779-8592

**"OVERNIGHT CAMPS" ALSO AVAILABLE**  
[Leadaz.org/Getaway](http://Leadaz.org/Getaway)

# SENIOR REMINDERS

## FAFSA INFORMATION

I HAVE EMAILED HOME A LINK TO A SURVEY FOR SENIORS TO FILL OUT. IT IS CRUCIAL INFORMATION THE SCHOOL NEEDS. MONDAY IS THE DEADLINE.

[SENIOR SURVEY](#)

FAFSA IS NOT ONLY A LOAN GENERATOR IT ALSO PROVIDES GRANTS AND SCHOLARSHIPS. FIND OUT IF YOU ARE ELIGIBLE. TAKE A FEW MINUTES TO WATCH THE VIDEO BELOW.

[FAFSA IS MORE THAN JUST A LOAN](#)

## TRANSCRIPTS

IF STUDENTS ARE APPLYING TO A COLLEGE, THEY SHOULD BE OPENING AN ACCOUNT ON PARCHMENT.COM AND REQUESTING AN OFFICIAL TRANSCRIPT TO BE SENT TO THEIR COLLEGE OF CHOICE. THERE IS A \$4.40 FEE PER TRANSCRIPT, AND IT ALLOWS THE COLLEGE TO RECEIVE THE TRANSCRIPT THE SAME DAY.

PARENTS CAN ALSO GO IN A REQUEST A FREE VIEW. CALL PARCHMENT WITH ANY QUESTIONS

888-662-0874



[Back to Main Menu](#)

# SCHOLARSHIP INFORMATION

[THUNDERBIRDS SCHOLARS PROGRAM](#)

[FIESTA BOWL](#)

[DIVERSITY SCHOLARSHIP](#)

## CLASS OF 2025 THIS IS FOR YOU

[CLICK HERE TO FIND SCHOLARSHIPS FOR JUNIORS](#)

# COLLEGE INFORMATION

[TOP 10 COLLEGES WITH THE BEST FINANCIAL AID](#)

[Click here for College Virtual Tours](#)

ACADEMIC COUNSELOR

KENDY GONZALEZ

KENDY.GONZALEZ@EDUPRIZESCHOOLS.NET

480-813-9537 EX 3150

[Back to Main Menu](#)



# Health Office Updates



## IMPORTANT HEALTH OFFICE INFORMATION

As illness or health situations occur throughout the school year, it may be necessary for medication to be administered at school. All prescribed AND over the counter medication (i.e. Tylenol, Ibuprofen, Benadryl, etc.) will need to be checked into the Health Office, along with a [Prescription and Non-prescription Medication Consent](#) form which requires a doctor's signature. These forms can be found on our website [www.eduprizeschools.net](http://www.eduprizeschools.net) under the Parent & Student Resources>Health Office Forms, or you can just click on any of the links provided in light blue.

- **HEALTH ACTION PLAN:** Please be aware that children who have asthma, diabetes, or seizures will need an action plan provided by their health care provider, ALONG with the signed [Prescription and Non-prescription Medication Consent](#) form .
- **ASTHMA:** If your child has asthma, an asthma action plan will need to be provided by your doctor ALONG with a signed [Prescription and Non-prescription Medication Consent](#) form .
- **ALLERGIES:** Allergies that require an EpiPen will need an [Anaphylaxis Management Packet](#) filled out and signed by a doctor along with the [Prescription and Non-prescription Medication Consent](#) form .
- **MEDICATION:** As a reminder, ALL medications need to be checked in at the Health Office. Students should not carry medications in their backpacks. A [Prescription and Non-prescription Medication Consent](#) form will also need to be filled out for any medications, prescription or non prescription.

We cannot accept ANY medications without these forms.

Any questions can be directed to the Health Office staff at (480) 813-9537 option 7

## Medication Authorization

If you would like your student to be able to access medication at school, please complete the authorization [FORM](#) and return to the health office.



[Back to Main Menu](#)

**NOW HIRING**  
**SUBSTITUTES**

**We offer:**

Competitive pay - \$20.75/hour (teacher certified)  
\$19.50/hour (sub certified)  
\$17/hour (no certification)

Flexible Schedules - Traditional day and AM/PM TOPS

Range of Classes - Grades PreK-12th grade and specialty classes like dance, PE, computers, and much more.

Incredible Community - Our staff, students, and parents are a welcoming and loving community you will enjoy being apart of.

**IF INTERESTED PLEASE EMAIL**

[emily.yeamen@eduprizeschools.net](mailto:emily.yeamen@eduprizeschools.net)

**WE'RE HIRING!!**

**COME AND JOIN OUR AIDE STAFF !**  
LOOKING FOR HARD WORKING PEOPLE WHO LOVE SAFETY AND WORKING WITH KIDS!



**TIMES NEEDED ARE:**

7:00-8:05 A.M.

10:20 A.M.-1:10 P.M.

2:30-3:40 P.M.

-GREAT FOR STAY AT HOME PARENTS, RETIREES AND COLLEGE STUDENTS OVER 21 YEARS OR OLDER.

- WE ARE VERY FLEXIBLE WITH SCHEDULES.

- FRIENDLY ENVIRONMENT

**JOB TYPE: PART-TIME 19HRS A WEEK**

**IF INTERESTED PLEASE CONTACT:**

**TYM BRITTON**

**AIDE SUPERVISOR**

**CAR LANE COORDINATOR**

**LUNCH PROGRAM COORDINATOR**

**EDUPRIZE GILBERT**

**PHONE: (480) 813-9537 EXT.1270**

**EMAIL: TYM.BRITTON@EDUPRIZESCHOOLS.NET**

**Back to Main Menu**

# Filing Instructions

# 22-23 Accident Coverage



## Add

# www.studentinsurance-kk.com to your school's website

Adding a link to your school's website may make it easier for parents to enroll their students in your endorsed student insurance plan. Our website, [www.studentinsurance-kk.com](http://www.studentinsurance-kk.com), provides easy online enrollment. You can choose from simply adding a simple text link or something more descriptive

### **Suggested samples for adding [www.StudentInsurance-KK.com](http://www.StudentInsurance-KK.com) to your school/district website:**

*As you select a listing from the samples below, please set up your choice with a hyperlink to <http://www.studentinsurance-kk.com>*

#### **1. Simple Text Options (with hyperlink)**

- example a. **Enroll in Student Insurance Here**  
example b. **Quote/Buy Student Insurance Online**

#### **2. Descriptive Text Options (with hyperlinks)**

- example a. **Student Accident Insurance** and the following paragraph either directly below or as a popup option. The paragraph also contains 2 hyperlink options (in bold).

*Our school/district has selected the **Student Insurance Plan** from K&K Insurance Group to make reliable coverage available to parents. If you don't have other insurance, this plan may be a resource to consider. Additionally, even if you have other coverage, this plan can help fill expensive "gaps" caused by deductible and co-pays. Coverage may be purchased at any time during the school year by visiting [www.studentinsurance-kk.com](http://www.studentinsurance-kk.com).*

- example b. **Student Accident Insurance** and the following paragraph either directly below or as a popup option. The paragraph also contains 1 hyperlink option (in bold).

*Our school/district has selected the **Student Insurance Plan** from K&K Insurance to make reliable coverage available to parents. Coverage may be purchased at any time during the school year by visiting [www.studentinsurance-kk.com](http://www.studentinsurance-kk.com).*

If you do not have the ability to add links to your website, simply pass this sheet along to the technology team responsible for your school/district website. You may encourage individual schools to add this to their own sites as well. If you need additional assistance, please send an email to [info@studentinsurance-kk.com](mailto:info@studentinsurance-kk.com).