

EAGLES EDITION



Principal's Message

Hello Eagles,

This week we concluded state testing, with the exception of our make up day on Monday, April 22, 2024. Testing is timely, tiring, and stressful for our students. I would like to thank our families for supporting their student(s) during this time.

We have Spirit Week next week! Show your school spirit by participating in the following:

- Monday, April 22nd: Twin Day - twin with someone
- Tuesday, April 23rd: Decade's Day - dress like your favorite decade
- Wednesday, April 24th: Beauty, Brains or Brawn - which one will you represent?
- Thursday, April 25th: Anything but a Backpack - carry your belongings in anything but a backpack (must not be larger than backpack size)
- Friday, April 26th: Students Dress Like Teacher/Teachers Dress Like Students

Here are a few reminders:

- With the increased outside temperatures please remind your student(s) to follow the dress code policy. Students who are not dressed appropriately will be asked to change clothes. Adhering to the dress code standards minimizes disruption and/distraction in the classroom.
- We are starting to see and uptick with tardies. It is important to make sure your student(s) arrive at school on time.
- Finally, please continue to encourage your student(s) to bring their digital devices fully charged for each day of school. Let's finish the school year strong!

Have a great weekend Eagles!

Warm Regards,
Dr. Jennifer Murphy



QUICK REFERENCES

Page Jumps

New Feature:

Click the topic you want and jump straight to that page

[Calendar](#)

[Athletic Department](#)

[International Baccalaureate](#)

[PTN](#)

[Handicapped Parking](#)

[JH Beach Bash](#)

New

[Spirit Week](#)

**Next
Week**

[Yearbook](#)

[ASU Summer Programs](#)

[Senior Reminders](#)

[FAFSA](#)

[Health Office News](#)

[Job Opportunities](#)

Helpful Links

[Gilbert's Parents
Resource Page](#)



[7th-12th
School Calendar](#)

[7th-12th
Events Calendar](#)



[Friday A/B
Schedule](#)

[7th-8th Bell
Schedule](#)

[9th-12th
Bell Schedule](#)

[Website](#)

[Facebook](#)

[PTN
Website](#)

[PTN
Facebook](#)

CALENDAR

This Month

APRIL

22nd: Make-up Testing

26th: JH End of School Party
12:30-2:00PM

Next Month

MAY

4th: Junior & Senior Prom

6th-10th: Teacher Appreciation Week

9th: Eagle Expo
5:00-6:30PM

23rd: 8th grade promotion
8:00AM

23rd: Last Day of School
Early Release

23rd: Senior Walk
10:30AM

23rd: Senior Graduation
5:00PM

[Back to Main Menu](#)

ATHLETIC DEPARTMENT

Please check AZCAAPREPS.COM regularly for up-to-the-minute game schedule and locations.

ALL athletic fees need to be paid by the first game. Unpaid fees can lead to not playing in games. All paperwork should be in for all sports at this time. Please verify with your coach to be sure all your paperwork is turned in.

This is the schedule for April 22 - April 26

Varsity Girls Flag Football GAMES:

Monday (4/22) vs Estrella HS FORFIET

Jr High Boys Basketball GAMES:

Tuesday (4/23) vs EVAC in B4 @ 4:30 pm

Jr High Boys Basketball Practice:

Monday/Wednesday 3:30-5:00 in B4
Thursday 3:30-5:00 in B3

Elementary Boys Basketball GAMES:

Thursday (4/25) vs Val Vista Academy @ 4:00pm in B4
Friday (4/26) vs EVAC @ 4:00pm in B4

Elementary Boys Basketball Practice:

Tuesday 3-4:30 in B3

You can find all forms listed here:

<https://www.eduprizeschools.net/gilbert-sports-and-extracurricular-activities/>

Make sure you bring proper attire and plenty of water to practice!

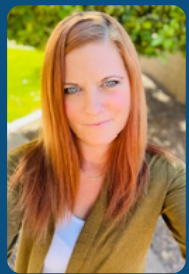
Let's have another great sports season!

If you have any questions please email the Athletic Director
Clint.ambos@eduprizeschools.net

Interior & Exterior	Free Estimates
Proud Sponsor	
	
DOBROSKI PAINTING LLC Residential • Commercial • HOA	
ROC3322871 & 322995 DobroskiPainting.com jeffry@dobroskipainting.com	602-578-2898

**Proud Sponsors of
EDUPRIZE Athletics**

[Back to Main Menu](#)



Amy Smith
IB Director

IB Day of Service: Second semester IB Day of Service is right around the corner, on April 25th from 8-3. During this time, DP students help around our campus doing activities such as gardening, painting, helping teachers clean, working with students, and showing their dedication to be a holistic learner. Stay tuned for pictures.

IB Testing: IB exams begin at EDUPRIZE on May 1st, with IB Math. These exams will take place between May 1st and finishing on May 24th with AP Statistics. Students will not test everyday during this time, but they will need to be studying for their next exam throughout the portion of this time. Parents, please encourage kids to keep working, even when they feel overwhelmed and feel free to quiz them at home. This is a really tough time for IB students (especially seniors), so giving them words of encouragement and expressing your pride really goes a long way.

IB ELA SL: As previously mentioned, ALL incoming juniors will take IB SL instead of the previously taught English course. One teacher described this as “rebranding” without too much of a change. Students will still be utilizing MyPerspectives along with reading 4 texts over a two year period. Teachers will incorporate the IB Learner Profile along with IB Standards and Practices to ensure that the needs of ALL students are being met. Then, at the end of their senior year, students can choose to take the IB exam for a chance at college credit—stay tuned for more information as that time gets closer. If you’d like more information about this initiative and how other schools are doing this, feel free to visit this website <https://ibo.org/programmes/diploma-programme/adopt-dp-courses-school-wide/>

Have a great weekend,
Amy Smith
DP Coordinator

[Back to Main Menu](#)

P T N notes

EVENTS:

****** ALL of these events are ONLY made possible by having volunteers. Please please reach out to us at ptn@eduprizeschools.net to help.

Teacher Appreciation Week – Help us spoil teachers and show them love during teacher appreciation week. Use this [link](#) to sign-up!



Yearbook – The yearbook committee needs photographs of special events & sports games for Kinder through 6th grade. If you have great photographs, please email them to eduprizeyearbookchair@gmail.com for a chance to have them featured in the yearbook!

Did you know you can earn money for Eduprize simply by shopping at Fry's?

Just link your Fry's Rewards card online with Eduprize.

Go to: www.fryscommunityrewards.com & sign in.

Then click Community Rewards and find your organization (Edu-Prize Parent Teacher Organization) or enter our number: HM079.

If you are interested in getting involved with PTN and volunteering at school events, please emails us at ptn@eduprizeschools.net

Back to Main Menu



HANDICAPPED PARKING

Please remember we have students at our school who require the handicapped parking spots to get in and out of their parent's cars.

- Do NOT use the superintendent parking spot, even for quick drop offs.
- Only those who have parking passes to allow handicapped parking may park in those designated areas.
- Please be aware that some cars parked in the handicapped spots require wheelchair ramps to get their child in and out of the car. Please be courteous around those parked cars to allow space and drive slowly.
- No cars should be in the loading zone area at any time.

Thank you for your help to keep our students and families safe. We know drop off/pick up times can get crazy and appreciate you adhering to this rules.



[Back to Main Menu](#)



JUNIOR HIGH BEACH BASH

COST IS \$5.00

THIS WILL INCLUDE A BOTTLE OF WATER AND A SNACK

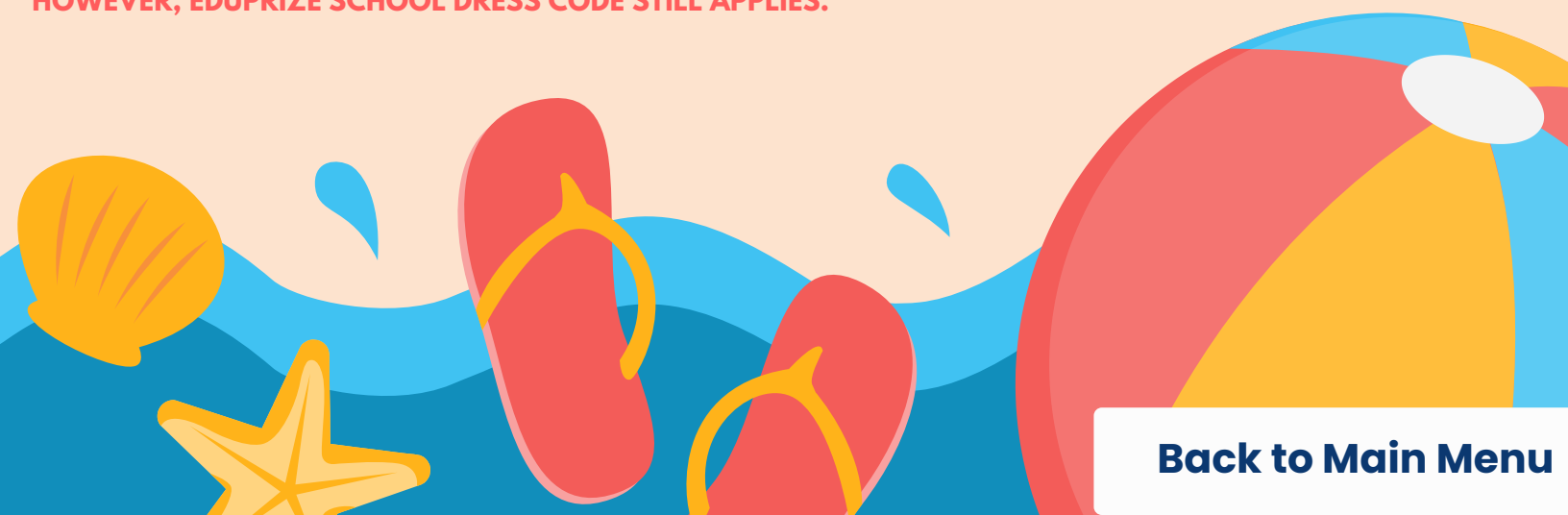
Friday, April 26th

12:30-2:00PM

B3 Gym

THIS IS AN *INFORMAL* DANCE

**STUDENTS DO NOT NEED TO BE DRESSED UP.
HOWEVER, EDUPRIZE SCHOOL DRESS CODE STILL APPLIES.**



[Back to Main Menu](#)

SPIRIT WEEK

[Back to Main Menu](#)

APRIL 22ND-26TH

MONDAY



TWIN DAY

TUESDAY



DECADES DAY



WEDNESDAY



BEAUTY, BRAINS,
& BRAWN



THURSDAY

ANYTHING BUT A
BACKPACK DAY



*CANNOT BE LARGER THAN AN AVERAGE
BACKPACK

FRIDAY



SWITCH DAY



STUDENTS DRESS AS TEACHERS AND
TEACHERS DRESS AS STUDENTS

DON'T MISS OUT

★ 2024 ★
YEARBOOK

**Order by 4/20 to have
it delivered before the
school year is over**

**treering.comPassCode=
1016046167991742**



Back to Main Menu



LeadAZ.org/summer



Logic, Leadership, & Life Skills Summer Programs @ ASU

Tempe
Polytechnic
West

\$25 Off
With Code:
OUTREACH

\$350

Social
Networking

Team
Building

Goal
Setting

Stress
Management

[Back to Main Menu](#)

Over **88%** of parents say this program
changed their teen's life in just 1 week!

Leadership Society of Arizona
Team@LeadAZ.org
480-779-8592

"OVERNIGHT CAMPS" ALSO AVAILABLE
Leadaz.org/Getaway

SENIOR REMINDERS

FAFSA INFORMATION

HERE IS A FUN VIDEO TO WATCH TO LEARN MORE ABOUT THE IMPORTANCE OF SIGNING UP FOR FAFSA. EVEN IF YOU ARE UNDECIDED WE ENCOURAGE ALL SENIORS TO APPLY.

[WHAT IS FAFSA?](#)

TRANSCRIPTS

IF STUDENTS ARE APPLYING TO A COLLEGE, THEY SHOULD BE OPENING AN ACCOUNT ON PARCHMENT.COM AND REQUESTING AN OFFICIAL TRANSCRIPT TO BE SENT TO THEIR COLLEGE OF CHOICE. THERE IS A \$4.40 FEE PER TRANSCRIPT, AND IT ALLOWS THE COLLEGE TO RECEIVE THE TRANSCRIPT THE SAME DAY.

PARENTS CAN ALSO GO IN A REQUEST A FREE VIEW. CALL PARCHMENT WITH ANY QUESTIONS
888-662-0874



[Back to Main Menu](#)

SCHOLARSHIP INFORMATION

[THUNDERBIRDS SCHOLARS PROGRAM](#)

[FIESTA BOWL
DIVERSITY SCHOLARSHIP](#)

CLASS OF 2025 THIS IS FOR YOU

[CLICK HERE TO FIND SCHOLARSHIPS FOR
JUNIORS](#)

COLLEGE INFORMATION

[TOP 10 COLLEGES WITH THE BEST
FINANCIAL AID](#)

[Click here for College Virtual Tours](#)

[Back to Main Menu](#)

Health Office Updates



IMPORTANT HEALTH OFFICE INFORMATION

As illness or health situations occur throughout the school year, it may be necessary for medication to be administered at school. All prescribed AND over the counter medication (i.e. Tylenol, Ibuprofen, Benadryl, etc.) will need to be checked into the Health Office, along with a [Prescription and Non-prescription Medication Consent](#) form which requires a doctor's signature. These forms can be found on our website www.eduprizeschools.net under the Parent & Student Resources>Health Office Forms, or you can just click on any of the links provided in light blue.

- **HEALTH ACTION PLAN:** Please be aware that children who have asthma, diabetes, or seizures will need an action plan provided by their health care provider, ALONG with the signed [Prescription and Non-prescription Medication Consent](#) form .
- **ASTHMA:** If your child has asthma, an asthma action plan will need to be provided by your doctor ALONG with a signed [Prescription and Non-prescription Medication Consent](#) form .
- **ALLERGIES:** Allergies that require an EpiPen will need an [Anaphylaxis Management Packet](#) filled out and signed by a doctor along with the [Prescription and Non-prescription Medication Consent](#) form .
- **MEDICATION:** As a reminder, ALL medications need to be checked in at the Health Office. Students should not carry medications in their backpacks. A [Prescription and Non-prescription Medication Consent](#) form will also need to be filled out for any medications, prescription or non prescription.

We cannot accept ANY medications without these forms.

Any questions can be directed to the Health Office staff at (480) 813-9537 option 7

Medication Authorization

If you would like your student to be able to access medication at school, please complete the authorization [FORM](#) and return to the health office.



[Back to Main Menu](#)

NOW HIRING
SUBSTITUTES

We offer:

Competitive pay - \$20.75/hour (teacher certified)
\$19.50/hour (sub certified)
\$17/hour (no certification)

Flexible Schedules - Traditional day and AM/PM TOPS

Range of Classes - Grades PreK-12th grade and specialty classes like dance, PE, computers, and much more.

Incredible Community - Our staff, students, and parents are a welcoming and loving community you will enjoy being apart of.

IF INTERESTED PLEASE EMAIL

emily.yeaman@eduprizeschools.net



WE'RE HIRING!!

COME AND JOIN OUR AIDE STAFF !
LOOKING FOR HARD WORKING PEOPLE WHO LOVE SAFETY AND WORKING WITH KIDS!



TIMES NEEDED ARE:

7:00-8:05 A.M.

10:20 A.M.-1:10 P.M.

2:30-3:40 P.M.

-GREAT FOR STAY AT HOME PARENTS, RETIREES AND COLLEGE STUDENTS OVER 21 YEARS OR OLDER.

- WE ARE VERY FLEXIBLE WITH SCHEDULES.

- FRIENDLY ENVIRONMENT

JOB TYPE: PART-TIME 19HRS A WEEK

IF INTERESTED PLEASE CONTACT:

TYM BRITTON

AIDE SUPERVISOR

CAR LANE COORDINATOR

LUNCH PROGRAM COORDINATOR

EDUPRIZE GILBERT

PHONE: (480) 813-9537 EXT.1270

EMAIL: TYM.BRITTON@EDUPRIZESCHOOLS.NET

Back to Main Menu



Add

www.studentinsurance-kk.com to your school's website

Adding a link to your school's website may make it easier for parents to enroll their students in your endorsed student insurance plan. Our website, www.studentinsurance-kk.com, provides easy online enrollment. You can choose from simply adding a simple text link or something more descriptive

Suggested samples for adding www.StudentInsurance-KK.com to your school/district website:

As you select a listing from the samples below, please set up your choice with a hyperlink to <http://www.studentinsurance-kk.com>

1. Simple Text Options (with hyperlink)

- example a.* **Enroll in Student Insurance Here**
example b. **Quote/Buy Student Insurance Online**

2. Descriptive Text Options (with hyperlinks)

- example a.* **Student Accident Insurance** and the following paragraph either directly below or as a popup option. The paragraph also contains 2 hyperlink options (in bold).
*Our school/district has selected the **Student Insurance Plan** from K&K Insurance Group to make reliable coverage available to parents. If you don't have other insurance, this plan may be a resource to consider. Additionally, even if you have other coverage, this plan can help fill expensive "gaps" caused by deductible and co-pays. Coverage may be purchased at any time during the school year by visiting www.studentinsurance-kk.com.*
- example b.* **Student Accident Insurance** and the following paragraph either directly below or as a popup option. The paragraph also contains 1 hyperlink option (in bold).
*Our school/district has selected the **Student Insurance Plan** from K&K Insurance to make reliable coverage available to parents. Coverage may be purchased at any time during the school year by visiting www.studentinsurance-kk.com.*

If you do not have the ability to add links to your website, simply pass this sheet along to the technology team responsible for your school/district website. You may encourage individual schools to add this to their own sites as well. If you need additional assistance, please send an email to info@studentinsurance-kk.com.