

EAGLES EDITION



Principal's Message

Hello Eagles,

As we inch closer to the end of the school, there will be many events coming up. Please continue to read the weekly newsletter for more information.

On Saturday April 14, 2024 our high school art students will be featuring an art gallery walk. The showcase will be from 2:00 - 4:00 PM in B4. We are looking forward to seeing everyone there.

We have one more week of testing. Our 9th graders will be taking the ACT Aspire assessment beginning on April 16, 2024 through April 18, 2024. Please continue to encourage your student(s) to bring their chromebooks to school, fully charged, everyday.

Our 7th graders will be taking a field trip to see the Biosphere on April 17, 2024. Please make sure you sign your student(s) permission slips, they are due Monday. If you have not paid the Life Fund, your student(s) might not be able to participate in the field trip.

The senior fee is due Friday, April 19, 2024. The fee is \$40.00, which covers some of the cost of the traditions we like to provide to our seniors. Senior parents, please reference the senior letter sent on April 2, 2024.

Finally, teacher appreciation week is right around the corner. If you would like to help our PTN celebrate our teachers please click the link below to sign up.

- [Teacher Appreciation Sign Up](#)

Have a great weekend Eagles!

Sincerely,
Dr. Jennifer Murphy



QUICK REFERENCES

Page Jumps

New Feature:

Click the topic you want and jump straight to that page

[Calendar](#)

[Athletic Department](#)

[International Baccalaureate](#)

[PTN](#)

New Link

[JH Beach Bash](#)

[Spirit Week](#)

New

[Art Show](#)

[Gifted Testing](#) *Tomorrow*

[ASU Summer Programs](#)

[Yearbook](#)

[Enrollment](#)

[Senior Reminders](#)

[FAFSA](#)

[Health Office News](#)

[Job Opportunities](#)

Helpful Links

[Gilbert's Parents
Resource Page](#)



[7th-12th
School Calendar](#)

[7th-12th
Events Calendar](#)



[Friday A/B
Schedule](#)

[7th-8th Bell
Schedule](#)

[9th-12th
Bell Schedule](#)

[Website](#)

[Facebook](#)

[PTN
Website](#)

[PTN
Facebook](#)

CALENDAR

This Month

APRIL

13th: Art Show

2:00-5:00PM

15th: Make-up Testing

16th-18th: ACT Aspire Testing

9th Grade

17th: GCU Field Trip

11th & 12th Grade

17th: Biosphere Field Trip

7th Grade

22nd: Make-up Testing

26th: JH End of School Party

12:30-2:00PM

Next Month

MAY

4th: Junior & Senior Prom

6th-10th: Teacher Appreciation Week

9th: Eagle Expo

5:00-6:30PM

23rd: 8th grade promotion

At 8am

23rd: Last Day of School

Early Release

23rd: Senior Walk

10:30AM

23rd: Senior Graduation

At 5PM

[Back to Main Menu](#)

ATHLETIC DEPARTMENT

Please check AZCAAPREPS.COM regularly for up-to-the-minute game schedule and locations.

ALL athletic fees need to be paid by the first game. Unpaid fees can lead to not playing in games. All paperwork should be in for all sports at this time. Please verify with your coach to be sure all your paperwork is turned in.

This is the schedule for April 15 - April 19

Varsity Girls Flag Football GAMES:

Thursday (4/11) Vs Estrella High @ 4:30 on B3 Field

Varsity Girls Flag Football Practice:

Tuesday & Wednesday 3:30-4:45

Jr High Boys Basketball Games:

Monday (4/15) @ LFPA (3939 E Warner Rd) @ 5:00 pm

Thursday (4/18) Vs Champion Schools @ 5:30 in B4

Jr High Boys Basketball Practice:

Tuesday 3:30 - 5:30 in B3

Wednesday 3:30-5:30 in B4

Elementary Boys Basketball Game:

Tuesday (4/16) Vs Heritage @ 4:00 pm in B4

Thursday (4/18) Vs San Tan Charter @ 4 pm in B4

Elementary Boys Basketball Practice:

Wednesday 3-4:30 in B4

You can find all forms listed here:

<https://www.eduprizeschools.net/gilbert-sports-and-extracurricular-activities/>

Make sure you bring proper attire and plenty of water to practice!

Let's have another great sports season!

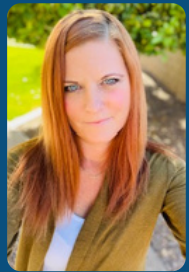
If you have any questions please email the Athletic Director

Clint.ambos@eduprizeschools.net

Interior & Exterior	Free Estimates
Proud Sponsor	
	
DOBROSKI PAINTING LLC	
Residential • Commercial • HOA	
ROC3322871 & 322995 DobroskiPainting.com jeffry@dobroskipainting.com	602-578-2898

**Proud Sponsors of
EDUPRIZE Athletics**

Back to Main Menu



Amy Smith
IB Director

IB Day of Service: Second semester IB Day of Service is right around the corner, on April 25th from 8-3. During this time, DP students help around our campus doing activities such as gardening, painting, helping teachers clean, working with students, and showing their dedication to be a holistic learner. Stay tuned for pictures.

IB Testing: IB exams begin at EDUPRIZE on May 1st, with IB Math. These exams will take place between May 1st and finishing on May 24th with AP Statistics. Students will not test everyday during this time, but they will need to be studying for their next exam throughout the portion of this time. Parents, please encourage kids to keep working, even when they feel overwhelmed and feel free to quiz them at home. This is a really tough time for IB students (especially seniors), so giving them words of encouragement and expressing your pride really goes a long way.

IB ELA SL: As previously mentioned, ALL incoming juniors will take IB SL instead of the previously taught English course. One teacher described this as “rebranding” without too much of a change. Students will still be utilizing MyPerspectives along with reading 4 texts over a two year period. Teachers will incorporate the IB Learner Profile along with IB Standards and Practices to ensure that the needs of ALL students are being met. Then, at the end of their senior year, students can choose to take the IB exam for a chance at college credit—stay tuned for more information as that time gets closer. If you’d like more information about this initiative and how other schools are doing this, feel free to visit this website <https://ibo.org/programmes/diploma-programme/adopt-dp-courses-school-wide/>

Have a great weekend,
Amy Smith
DP Coordinator

[Back to Main Menu](#)

P T N notes

EVENTS:

****** ALL of these events are ONLY made possible by having volunteers. Please please reach out to us at ptn@eduprizeschools.net to help.

Teacher Appreciation Week – Help us spoil teachers and show them love during teacher appreciation week. Use this [link](#) to sign-up!



Yearbook – The yearbook committee needs photographs of special events & sports games for Kinder through 6th grade. If you have great photographs, please email them to eduprizeyearbookchair@gmail.com for a chance to have them featured in the yearbook!

Did you know you can earn money for Eduprize simply by shopping at Fry's?

Just link your Fry's Rewards card online with Eduprize.

Go to: www.fryscommunityrewards.com & sign in.

Then click Community Rewards and find your organization (Edu-Prize Parent Teacher Organization) or enter our number: HM079.

If you are interested in getting involved with PTN and volunteering at school events, please emails us at ptn@eduprizeschools.net

Back to Main Menu



JUNIOR HIGH BEACH BASH

COST IS \$5.00

THIS WILL INCLUDE A BOTTLE OF WATER AND A SNACK

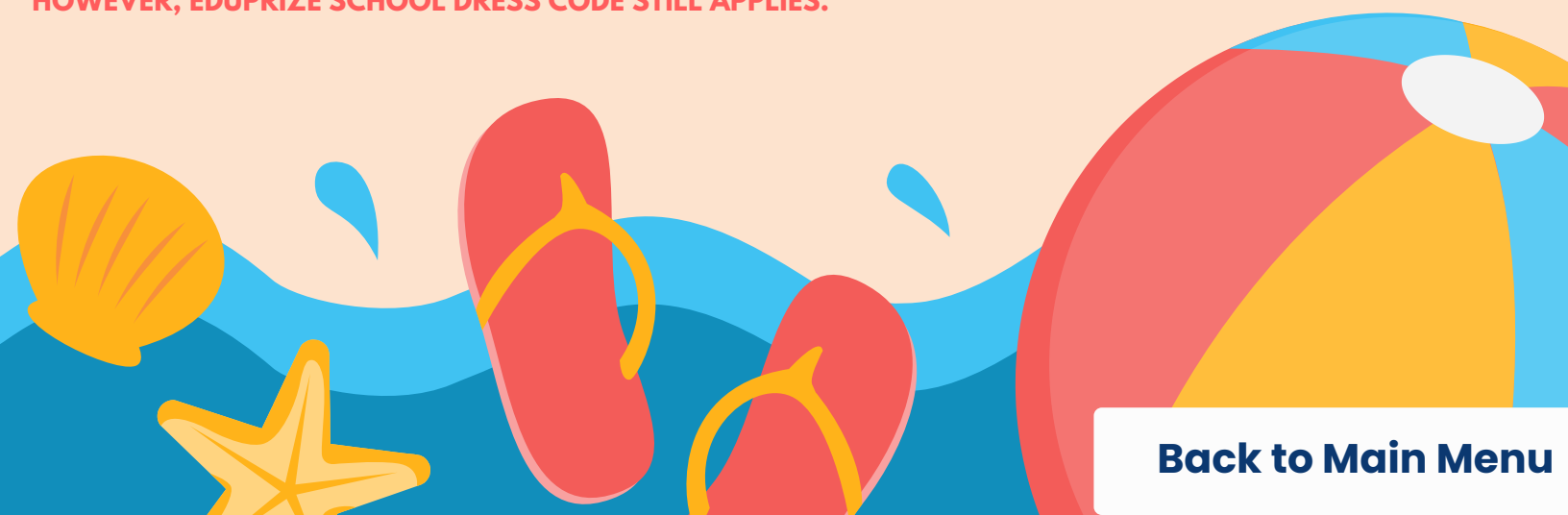
Friday, April 26th

12:30-2:00PM

B3 Gym

THIS IS AN *INFORMAL* DANCE

**STUDENTS DO NOT NEED TO BE DRESSED UP.
HOWEVER, EDUPRIZE SCHOOL DRESS CODE STILL APPLIES.**



[Back to Main Menu](#)

SPIRIT WEEK

[Back to Main Menu](#)

APRIL 22ND-26TH

MONDAY



TWIN DAY

TUESDAY



DECADES DAY



WEDNESDAY



BEAUTY, BRAINS,
& BRAWN



THURSDAY

ANYTHING BUT A
BACKPACK DAY



*CANNOT BE LARGER THAN AN AVERAGE
BACKPACK

FRIDAY



SWITCH DAY



STUDENTS DRESS AS TEACHERS AND
TEACHERS DRESS AS STUDENTS

**EVERYONE IS
INVITED TO...**

THE ART SHOW!!!

**come see OUR IB VISUAL ART CLASS PRESENT THE
ARTWORKS AND MASTERPIECES THEY'VE BEEN
WORKING ON ALL YEAR!**

- **WHERE?: BUILDING 4 GYM**
- **WHEN?: SATURDAY, APRIL 13, 2024, 2:00-5:00PM**
 - **FOOD AND DRINKS PROVIDED!!!**
 - **LOOK AT RARE ARTWORKS!!!**
 - **BUY THOSE RARE ARTWORKS!!!**
 - **SUPPORT THE STUDENTS!!!**
 - **PLEASE COME!!!!!!!!!!**

[Back to Main Menu](#)





•••

GIFTED SPRING TESTING

WHO: Returning students in Gr. 3-7

DATES: Week of 4/29 through 5/3

TOPIC: Testing for gifted qualification

NOMINATIONS: Open 4/1 through 4/12

PAYMENTS: Due 4/19

•••

[Back to Main Menu](#)



LeadAZ.org/summer



Logic, Leadership, & Life Skills Summer Programs @ ASU

Tempe
Polytechnic
West

\$25 Off
With Code:
OUTREACH

\$350

Social
Networking

Team
Building

Goal
Setting

Stress
Management

[Back to Main Menu](#)

Over **88%** of parents say this program
changed their teen's life in just 1 week!

Leadership Society of Arizona
Team@LeadAZ.org
480-779-8592

"OVERNIGHT CAMPS" ALSO AVAILABLE
Leadaz.org/Getaway

DON'T MISS OUT

★ 2024 ★
YEARBOOK

**Order by 4/20 to have
it delivered before the
school year is over**

**treering.comPassCode=
1016046167991742**



Back to Main Menu

ENROLLMENT

2024-2025

Intent to Return (re-enrollment) for the 2024-25 school year is now open!

Click [HERE](#) to complete the form today.

Intent to Return for the 2024-2025 school year is open now until January 15th. The LIFE Fund Fee for next school year will be discounted to \$50 per returning student during this same time frame!

Please contact the enrollment office with any questions: gilbertenrollment@eduprizeschools.net or (480) 813-9537 x1030.

[Back to Main Menu](#)

SENIOR REMINDERS

ARE YOU ON TRACK?

Take initiative and check Infinite Campus to see if you are on track. Check in with your teachers.

TRANSCRIPTS

IF STUDENTS ARE APPLYING TO A COLLEGE, THEY SHOULD BE OPENING AN ACCOUNT ON PARCHMENT.COM AND REQUESTING AN OFFICIAL TRANSCRIPT TO BE SENT TO THEIR COLLEGE OF CHOICE. THERE IS A \$4.40 FEE PER TRANSCRIPT, AND IT ALLOWS THE COLLEGE TO RECEIVE THE TRANSCRIPT THE SAME DAY.

PARENTS CAN ALSO GO IN A REQUEST A FREE VIEW. CALL PARCHMENT WITH ANY QUESTIONS
888-662-0874



[Back to Main Menu](#)

SCHOLARSHIP INFORMATION

[THUNDERBIRDS SCHOLARS PROGRAM](#)

FAFSA INFORMATION

[HERE](#) IS A FUN VIDEO TO WATCH TO LEARN MORE ABOUT THE IMPORTANCE OF SIGNING UP FOR FAFSA. EVEN IF YOU ARE UNDECIDED WE ENCOURAGE ALL SENIORS TO APPLY.

[WHAT IS FAFSA?](#)

COLLEGE INFORMATION

[TOP 10 COLLEGES WITH THE BEST FINANCIAL AID](#)

[Back to Main Menu](#)

Health Office Updates



IMPORTANT HEALTH OFFICE INFORMATION

As illness or health situations occur throughout the school year, it may be necessary for medication to be administered at school. All prescribed AND over the counter medication (i.e. Tylenol, Ibuprofen, Benadryl, etc.) will need to be checked into the Health Office, along with a [Prescription and Non-prescription Medication Consent](#) form which requires a doctor's signature. These forms can be found on our website www.eduprizeschools.net under the Parent & Student Resources>Health Office Forms, or you can just click on any of the links provided in light blue.

- **HEALTH ACTION PLAN:** Please be aware that children who have asthma, diabetes, or seizures will need an action plan provided by their health care provider, ALONG with the signed [Prescription and Non-prescription Medication Consent](#) form .
- **ASTHMA:** If your child has asthma, an asthma action plan will need to be provided by your doctor ALONG with a signed [Prescription and Non-prescription Medication Consent](#) form .
- **ALLERGIES:** Allergies that require an EpiPen will need an [Anaphylaxis Management Packet](#) filled out and signed by a doctor along with the [Prescription and Non-prescription Medication Consent](#) form .
- **MEDICATION:** As a reminder, ALL medications need to be checked in at the Health Office. Students should not carry medications in their backpacks. A [Prescription and Non-prescription Medication Consent](#) form will also need to be filled out for any medications, prescription or non prescription.

We cannot accept ANY medications without these forms.

Any questions can be directed to the Health Office staff at (480) 813-9537 option 7

Medication Authorization

If you would like your student to be able to access medication at school, please complete the authorization [FORM](#) and return to the health office.



[Back to Main Menu](#)

NOW HIRING
SUBSTITUTES

We offer:

Competitive pay - \$20.75/hour (teacher certified)
\$19.50/hour (sub certified)
\$17/hour (no certification)

Flexible Schedules - Traditional day and AM/PM TOPS

Range of Classes - Grades PreK-12th grade and specialty classes like dance, PE, computers, and much more.

Incredible Community - Our staff, students, and parents are a welcoming and loving community you will enjoy being apart of.

IF INTERESTED PLEASE EMAIL

emily.yeamen@eduprizeschools.net



WE'RE HIRING!!

COME AND JOIN OUR AIDE STAFF !
LOOKING FOR HARD WORKING PEOPLE WHO LOVE SAFETY AND WORKING WITH KIDS!



TIMES NEEDED ARE:

7:00-8:05 A.M.

10:20 A.M.-1:10 P.M.

2:30-3:40 P.M.

-GREAT FOR STAY AT HOME PARENTS, RETIREES AND COLLEGE STUDENTS OVER 21 YEARS OR OLDER.

- WE ARE VERY FLEXIBLE WITH SCHEDULES.

- FRIENDLY ENVIRONMENT

JOB TYPE: PART-TIME 19HRS A WEEK

IF INTERESTED PLEASE CONTACT:

TYM BRITTON

AIDE SUPERVISOR

CAR LANE COORDINATOR


LUNCH PROGRAM COORDINATOR

EDUPRIZE GILBERT

PHONE: (480) 813-9537 EXT.1270

EMAIL: TYM.BRITTON@EDUPRIZESCHOOLS.NET

Back to Main Menu



Website

Our webpage contains important information such as parent notices, dates of our Board meetings and budgets, and important ECA programs and tax credit information.

Resumés

Resumé information for all instructional staff is available in the administration office.

Free and Reduced Lunch/Every Student Succeeds Act

EDUPRIZE does not participate in the official National School Lunch Program. A reduction of 10% is offered to parents who meet the Federal Income Guidelines at the Gilbert campus. Applications are available at the Front Desk of all buildings.

Board of Directors Meeting

Board of Directors meetings are generally held every month and the date, location and times are posted on our website. Meeting agenda is posted on the business bulletin board on site and on line on the school website.

<https://www.eduprizeschools.net/board-2/>

Equal Employment/Enrollment Opportunities

EDUPRIZE provides equal opportunity to all employees and enrolled students and is not biased regarding race, gender, ethnicity, religion, national origin, language proficiency or disability.

Open Enrollment

EDUPRIZE ensures that it complies with all open enrollment requirements per state law. EDUPRIZE uses a lottery system for filling openings and no tuition is required.

Political Activities

EDUPRIZE ensures that it does not use its forum or student base to promote any political activities or position

EL Information

Arizona is a very diverse state with many different cultures and languages. EDUPRIZE is no different, we have about 100 students that have a language other than English within the home. The languages represented include Spanish, German, Russian, Serbian, French, Arabic, Urdu, Korean and Cantonese, to name a few.

Any student that has another language, either spoken at home or by the student, must take a proficiency exam in English. Students who do not test proficient in English are called ELs, or English Learners. These students qualify for extra help during the day to improve English fluency. EDUPRIZE uses 2 different models of instruction, both include SEI (Structured English Immersion) endorsed teachers using English Language Proficiency (ELP) standards. In K-6th grade, we have a 2 hour SEI model, where students remain in their classroom and the teacher uses SEI strategies to increase English language proficiency.

This model will focus on Reading, Writing, Listening, Speaking and Grammar standards that are incorporated within the classroom instruction and small group lessons. In the 7-12th grades, students are in a pull-out program with an SEI endorsed teacher that provides 50 minutes of focused English instruction to EL students. Both programs use ELD (English Language Development) as well as ELP standards that tie the English language objectives to content instruction. Students are monitored in their English fluency progression each quarter and then are reassessed in Quarter 3 through a state test called the AZELLA-Arizona English Language Learner Assessment. As always, EDUPRIZE teachers do a remarkable job on helping our ELs increase their English proficiency each year.

