

# EAGLES EDITION

Gilbert School News | PreK-6th



## Principal's Message



**Robin Yeargain**

Dear EDUPRIZE Parents,

We are halfway through the quarter with exciting things happening!

First and foremost, the students are continuing to be led by amazing teachers who are passionate about the students and their education! They are consistently looking at student needs as well as academic excellence. I am so grateful for a faithful staff whose heart is centered on children first!

Our next few weeks are super busy! Check this out:

- Starting February 5th, in honor of Valentine's Day, students can purchase Valentine Grams for \$1 at the start of the school day. What is a Valentine Gram? It's a little notecard with a treat that students can sign and it will be delivered to their friends by Student Council members. ❤️
- Parent Teacher Conferences, February 12th-16th, are just a week away. Teachers sent out their Sign-Up Genius last Friday, please make sure to sign up. Conferences are important and speak volumes to your child affirming the partnership between teacher and parent, as well as the value of education.
- Project Exploration is on February 16th-18th for 80 fifth and sixth grade students. We will be heading to California on an Oceanography trip which includes a chartered boat on the ocean, a day at Sea World, and an exciting visit to the Scripps Aquarium.
- Spring Spectacular is on Friday, February 23rd from 4-8 pm. This family fun event is a great way to meet other EDUPRIZE families and have fun with your children!

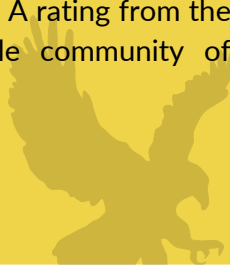
There has been a change in our PTN Board and with that has come some adjustments to Spring Spectacular, which is approaching quickly. One of these adjustments will be the pricing structure. We have heard your concerns and we are shifting back to our previous style with an admission fee that includes the games and activities. We will have bouncy houses, carnival games, a DJ, a Talent Show, and some more surprises that you will need to come check out yourself. It will be a family fun event! Food will also be sold, which will include dinner and snack options.

As always, so much is going on, which is exciting! There is no wonder why we are an A+ school, with an A rating from the state, and have the most prestigious accreditation. EDUPRIZE shines because of our incredible community of stakeholders!

Have a great weekend!

Kindly,

Robin



# QUICK REFERENCES

## Page Jumps

### New Feature:

Click the topic you want and jump straight to that page

[Calendar](#)

[SEL Corner](#)

[Athletic Department](#)

[PTN](#)

[Talent Show](#)

**Important  
Changes!**

[Spring Spectacular](#)

**Next  
Week!**

[Project Exploration](#)

[Candy Grams](#)

[Enrollment](#)

[Kinder Roundup](#)

**NEW**

[AZ529 Art Contest](#)

[Health Office News](#)

[Job Opportunities](#)

[School Information](#)

## Helpful Links

[Gilbert's Parents  
Resource Page](#)



[K-6th Regular  
Day Calendar](#)

[K-6th TOPS  
Day Calendar](#)



[K-6th Events  
Calendar](#)

[Website](#)

[Facebook](#)

[PTN  
Website](#)

[PTN  
Facebook](#)

# CALENDAR

## *This Month*

### FEBRUARY

**2nd: Sign Up Genius goes live**

Kinder TOPS Conferences

**8th: Board Meeting**

On Queen Creek Campus

**9th: Student Council**

**12th-16th: Conference Week**

Kinder - 6th Grade

**15th: Early Release**

Regular Day Students Only

**16th: Project Exploration Departure**

(2/16-2/18 Project Exploration Trip)

**19th: No School**

Presidents' Day Holiday

**22nd: Spring Pictures**

Regular Day Students

**23rd: Spring Pictures**

TOPS Students AND Sports Pictures

**23rd: Spring Spectacular**

**27th: Campus Tour (PreK-12th Grade)**

5 p.m. Bldg. 3 Lobby & Theater

## *Next Month*

### MARCH

**8th: Last day of the quarter**

**11th-22nd Spring Break**

No School

**25th: First day of quarter 4**

**29th: No School**

[Back to Main Menu](#)

# SEL CORNER

## (SOCIAL AND EMOTIONAL LEARNING)

Dear EDUPRIZE families,

During this time of year when we are all sick (including me) let's talk about rest. When you rest, you give your mind and emotions a break from stimuli. Here are ways to make it happen.



Heather Vehon  
Dean of Students K-6th

- **Practice acceptance** - you can't get it all done now and that is OK!
- **Be intentional** - allow your inner voice to say, "I am choosing to rest now. I will just 'be' and not 'do' anything."
- **Take in your surroundings** - don't distract yourself with mindless scrolling. Just take in the sights, sounds, smells, etc. all around you. Be present!
- **Knowing yourself** - figure out **how** you'd like to rest, you should focus on what grounds you, helps you feel most alive, and connects you to yourself.
- **Rethink the narrative** - productivity is not equal to self-worth.

[Check out the full article here](#) (or don't if you'd rather just rest)



Sincerely,  
Heather Vehon  
Dean of Students  
Eduprize Schools  
Gilbert Campus  
[heather.vehon@eduprizeschools.net](mailto:heather.vehon@eduprizeschools.net)

[Back to Main Menu](#)

# ATHLETIC DEPARTMENT

## Upcoming Week Sports Schedule At A Glance:

Please check [AZCAAPREPS.COM](http://AZCAAPREPS.COM) for up to the date game schedule and location.

**ALL Athletic fees need to be paid by the first game. Unpaid fees can lead to not playing in games.**

**All paperwork should be in for all sports at this time. Please with your coach to be sure all your paperwork is turned in.**

**\*\*HIGH SCHOOL GIRLS FLAG FOOTBALL TRYOUTS will be held on February 6 & 7 from 3:30-4:45\*\***

**This is the schedule for February 5th-9th**

### **Boys JV Basketball Practice Schedule:**

Monday 4:30-6:00 in B4

Wednesday 3:30- 5:00 in B3

### **Boys JV Basketball GAMES:**

Thursday (2/8) vs EVAC @ 4 pm in B4 Gym (LAST JV GAME)

### **Boys Varsity/OPEN Basketball Practice Schedule:**

TBD by Coach Ashton

### **Boys OPEN Basketball GAMES:**

Tuesday(2/6) @ Bella Vista @ 7:00 (3313 N 40th St, Phoenix)

Thursday (2/8) vs AZ Compass @ 7:00 in B4

### **Boys Varsity Basketball GAMES:**

Monday (2/5) @ Glenview College Prep @ 4:00 pm (4386 W Bethany Home Rd, Glendale)

Wednesday (2/7) vs PHH @ 5:30 pm in B4 (LAST REGULAR SEASON GAME)

### **Girls JV Basketball Practice Schedule:**

TBD by Coach Green

Maricopa)

### **Girls JV Basketball GAMES:**

Tues. 2/6 @ Heritage Maricopa @5:00pm (41000 W Heroes Way,

Wed. 2/7 vs Heritage Gateway @ 4:00 pm in B4 (LAST REGULAR SEASON GAME)

### **Girls Varsity Basketball Practice Schedule:**

Monday 5:30-7:30 in B3

Wednesday 5:30-7:30 in B3

### **Girls Varsity Basketball GAMES:**

Mon. 2/6 @Heritage Maricopa @ 6:30 (41000 W Heroes Way, Maricopa)

Thurs. 2/8 vs AZ Compass @5:30 m in B4 (LAST REGULAR SEASON GAME)

### **JH Boys Flag Football Practice:**

Tuesday & Wednesday 3:30- 4:45

### **JH Boys Flag Football Games:**

Mon. 2/5 @Legacy Queen Creek @4:00 (41800 N Barnes Pkwy, San Tan Valley)

Thursday (2/8) vs EVAC @ 4:00pm on our field

You can find all forms listed here:

<https://www.eduprizeschools.net/gilbert-sports-and-extracurricular-activities>

Make sure you wear proper attire and bring plenty of water.

If you have any questions please email the Athletic Director

[Clint.ambos@eduprizeschools.net](mailto:Clint.ambos@eduprizeschools.net)



**Thank you Dobroski PAINTING  
FOR BEING Proud sponsors  
of EDUPRIZE Athletics**

**[Back to Main Menu](#)**



# notes

There have been changes to the PTN Board. If you would like to interview for a board position, please send an email to [ptn@eduprizeschools.net](mailto:ptn@eduprizeschools.net). The deadline is February 6, 2024, and interviews will take place on February 7, 2024.

## PTN

President: Kim Wood

Secretary: Tiffany Stradling

## EVENTS:

**\*\*** ALL of these events are ONLY made possible by having volunteers.  
Please please reach out to us at [ptn@eduprizeschools.net](mailto:ptn@eduprizeschools.net) to help.

**Spring Spectacular** – Happening on February 23rd. A family fun event! Tickets will be available soon, with adjusted prices. Tickets will include admissions and access to all the activities. With activities such as bounce houses, carnival games, face painting, a talent show, a visit from Elsa and Spiderman, raffle prizes and more!!

If you are interested in [volunteering](#) to help please click [HERE](#):

If you are interested in becoming a [vendor](#) please email us at [ptn@eduprizeschools.net](mailto:ptn@eduprizeschools.net) for more information.

**\*\*Basket coordinators** are still needed! If you are interested in becoming one for your child's class please email us and we'll send you all the information to help you put together a phenomenal basket. It's easier than you think!

**Yearbook** – The yearbook committee needs photographs of special events & sports games for Kinder through 6th grade. If you have great photographs, please email them to [eduprizeyearbookchair@gmail.com](mailto:eduprizeyearbookchair@gmail.com) for a chance to have them featured in the yearbook!

Did you know you can earn money for Eduprize simply by shopping at Fry's?

Just link your Fry's Rewards card online with Eduprize.

Go to: [www.fryscommunityrewards.com](http://www.fryscommunityrewards.com) & sign in. Then click Community Rewards and find your organization (Edu-Prize Parent Teacher Organization) or enter our number: HM079.

If you are interested in getting involved with PTN and volunteering at school events, please email us at [ptn@eduprizeschools.net](mailto:ptn@eduprizeschools.net)

[Back to Main Menu](#)



**Show off your Talents at the  
Spring Spectacular**

**Friday, February 23rd from 4-9 pm  
1st, 2nd and 3rd Place Winners**

---

**Auditions: February 5th & 7th  
3:30-5 pm in the B3 Theater**

**Must Sign Up to audition - Ask your  
Teacher for the sign up genius link**

**Click [HERE](#)**

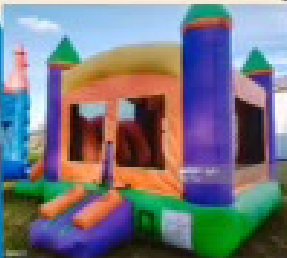
[Back to Main Menu](#)

**EDUPRIZE**

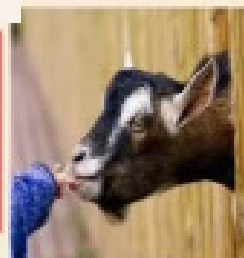


**Spring  
Spectacular**

**FEB 23, 2024 4-8PM**



**FOOD / PETTING ZOO / GAMES/  
BOUNCE HOUSES / VENDORS / DJ  
AND MUCH MUCH MORE!!!!**



**Admission Tickets includes all activities.  
Food and drink can you purchased separately.  
Ticket prices coming soon!**

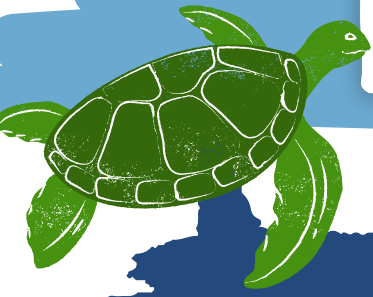


**580 W. Melody Ave  
Gilbert A. 85233**



# PROJECT EXPLORATION

Countdown to Departure:  
14 days (as of 2/2/24)

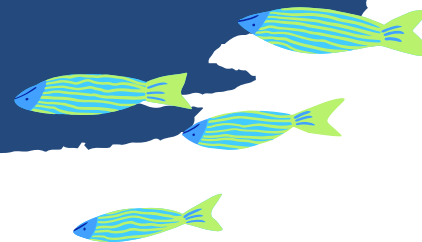


## Project Exploration

### Getting prepped for the trip:

- Students will need some money for lunch (about \$50) at SeaWorld on Saturday and dinner (about \$30) on Sunday. SeaWorld is CASHLESS, so the best option is to purchase prepaid Visa gift cards. If your student is interested in buying souvenirs, make sure to keep that dollar amount in mind too!
- It is required that your student attend school on Friday February 16th in order to remain eligible to attend the trip.
- Check in will be on Friday February 16th from 2:30–3:00pm in Building 3 Gym. Please come at your indicated time slot and park in the parking lot, NOT the carpool lanes.
  - 2:30–2:40 – Last Names Beginning with: A – G
  - 2:40–2:50 – Last Names Beginning with: H – Q
  - 2:50–3:00 – Last Names Beginning with: R – Z
- All medications must be checked in with our bus medics at check in prior to boarding the bus Friday. Medications should be in a Ziploc bag with YOUR NAME ON IT. They must be in the original container with written directions clearly stated.

Please email Ms. Schott if you have any questions.





**STUDENT COUNCIL IS SELLING:**



# Valentine Candy Grams

~FEBRUARY 5TH-9TH  
~SOLD AT MORNING DROP OFF



# \$1

**PROCEEDS WILL GO TOWARD  
SCHOOL BEAUTIFICATION!**

[Back to Main Menu](#)

# ENROLLMENT

## 2024-2025

**Intent to Return (re-enrollment) for the 2024-25 school year is now open!**

**Click [HERE](#) to complete the form today.**

**Intent to Return for the 2024-2025 school year is open now until January 15th. The LIFE Fund Fee for next school year will be discounted to \$50 per returning student during this same time frame!**

**Please contact the enrollment office with any questions: [gilbertenrollment@eduprizeschools.net](mailto:gilbertenrollment@eduprizeschools.net) or (480) 813-9537 x1030.**

**[Back to Main Menu](#)**



# Kindergarten

## Roundup!

**Join us:**

Thursday,  
February 29th  
4:30 - 6:00 pm



### CHECK US OUT!

Bring your incoming kindergartner to participate in engaging activities featuring our amazing, hands-on curriculum and teachers. You will get a glimpse of Kindergarten life at EDUPRIZE and learn why our students SOAR!

### FREE EVENT!

- Children will participate in FUN curricular stations taught by our fabulous kindergarten teachers
- Parents will receive information and guidance regarding program options and registration for the 2024-25 school year
- Open house style

EDUPRIZE Gilbert Campus  
Building 1  
580 West Melody Avenue  
Gilbert, AZ 85233

### QUESTIONS?

480-813-9537 x1030

[gilbertenrollment@eduprizeschools.net](mailto:gilbertenrollment@eduprizeschools.net)

**LEAP into  
Kindergarten  
at our award-  
winning school!**



[Back to Main Menu](#)



# Dream. Draw. Win.

Arizona K-6th graders can win \$529 towards an AZ529 Education Savings Plan.



AZ Treasurer Kimberly Yee

## AZ529 Future Career Art Contest!

How does your child picture their future career and the education to get there? Well, give them some paper and find out! To promote the importance of financial education and saving for future educational needs, we're holding our third Future Career Art Contest.

- ✓ Open to all K-6th grade students in Arizona, including students from district, charter, private, tribal schools, and homeschools.
- ✓ One (1) original entry per person.
- ✓ Have your child draw a picture of their dream job. They may use any medium they prefer, be it crayon, paint, pencil, or anything else that can be put to paper. Entry can be no larger than 8.5x11 inches.
- ✓ Entries accepted through March 3, 2024, 11:59 p.m. (MST).



Upload entries at: [AZ529.gov/2024ArtContest](https://AZ529.gov/2024ArtContest)  
(Acceptable formats: Word, .PDF, .JPG)

Having trouble? Please call (602) 542-7880 for assistance submitting your entry.



To enter and for full contest rules,

**[Click HERE](#)**



# AZ529

[Back to Main Menu](#)

# Health Office Updates



## IMPORTANT HEALTH OFFICE INFORMATION

As illness or health situations occur throughout the school year, it may be necessary for medication to be administered at school. All prescribed AND over the counter medication (i.e. Tylenol, Ibuprofen, Benadryl, etc.) will need to be checked into the Health Office, along with a [Prescription and Non-prescription Medication Consent](#) form which requires a doctor's signature. These forms can be found on our website [www.eduprizeschools.net](http://www.eduprizeschools.net) under the Parent & Student Resources>Health Office Forms, or you can just click on any of the links provided in light blue.

- HEALTH ACTION PLAN: Please be aware that children who have asthma, diabetes, or seizures will need an action plan provided by their health care provider, ALONG with the signed [Prescription and Non-prescription Medication Consent](#) form .
- ASTHMA: If your child has asthma, an asthma action plan will need to be provided by your doctor ALONG with a signed [Prescription and Non-prescription Medication Consent](#) form .
- ALLERGIES: Allergies that require an EpiPen will need an [Anaphylaxis Management Packet](#) filled out and signed by a doctor along with the [Prescription and Non-prescription Medication Consent](#) form .
- MEDICATION: As a reminder, ALL medications need to be checked in at the Health Office. Students should not carry medications in their backpacks. A [Prescription and Non-prescription Medication Consent](#) form will also need to be filled out for any medications, prescription or non prescription.

We cannot accept ANY medications without these forms.

Any questions can be directed to the Health Office staff at (480) 813-9537 option 7

## Medication Authorization

If you would like your student to be able to access medication at school, please complete the authorization [FORM](#) and return to the health office.



[Back to Main Menu](#)

# NOW HIRING SUBSTITUTES

## We offer:

Competitive pay - \$20.75/hour (teacher certified)  
\$19.50/hour (sub certified)  
\$17/hour (no certification)

Flexible Schedules - Traditional day and AM/PM TOPS

Range of Classes - Grades PreK-12th grade and specialty classes like dance, PE, computers, and much more.

Incredible Community - Our staff, students, and parents are a welcoming and loving community you will enjoy being a part of.

**IF INTERESTED PLEASE EMAIL**

[emily.yeaman@eduprizeschools.net](mailto:emily.yeaman@eduprizeschools.net)



**WE'RE  
HIRING!!**

**COME AND JOIN OUR AIDE STAFF !**

LOOKING FOR HARD WORKING PEOPLE WHO LOVE SAFETY AND WORKING WITH KIDS!

### TIMES NEEDED ARE:

7:00-8:05 A.M.

10:20 A.M.-1:10 P.M.

2:30-3:40 P.M.

-GREAT FOR STAY AT HOME PARENTS, RETIREES AND COLLEGE STUDENTS  
OVER 21 YEARS OR OLDER.

- WE ARE VERY FLEXIBLE WITH SCHEDULES.

- FRIENDLY ENVIRONMENT

JOB TYPE: PART-TIME 19HRS A WEEK



### IF INTERESTED PLEASE CONTACT:

**TYM BRITTON**

**AIDE SUPERVISOR**

**CAR LANE COORDINATOR**

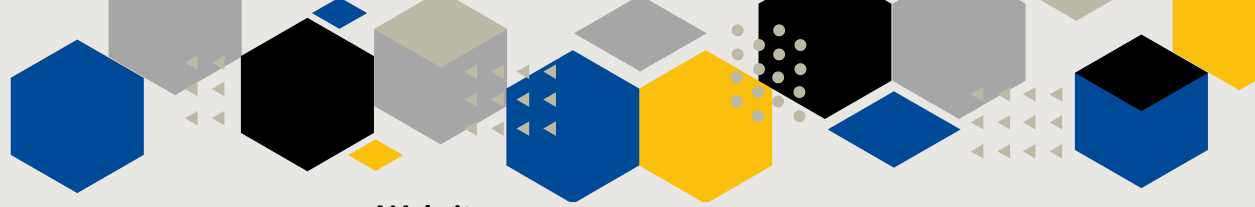
**LUNCH PROGRAM COORDINATOR**

**EDUPRIZE GILBERT**

**PHONE: (480) 813-9537 EXT.1270**

**EMAIL: TYM.BRITTON@EDUPRIZESCHOOLS.NET**

[Back to Main Menu](#)



### **Website**

Our webpage contains important information such as parent notices, dates of our Board meetings and budgets, and important ECA programs and tax credit information.

### **Resumés**

Resumé information for all instructional staff is available in the administration office.

### **Free and Reduced Lunch/Every Student Succeeds Act**

EDUPRIZE does not participate in the official National School Lunch Program. A reduction of 10% is offered to parents who meet the Federal Income Guidelines at the Gilbert campus. Applications are available at the Front Desk of all buildings.

### **Board of Directors Meeting**

Board of Directors meetings are generally held every month and the date, location and times are posted on our website. Meeting agenda is posted on the business bulletin board on site and on line on the school website.

<https://www.eduprizeschools.net/board-2/>

### **Equal Employment/Enrollment Opportunities**

EDUPRIZE provides equal opportunity to all employees and enrolled students and is not biased regarding race, gender, ethnicity, religion, national origin, language proficiency or disability.

### **Open Enrollment**

EDUPRIZE ensures that it complies with all open enrollment requirements per state law. EDUPRIZE uses a lottery system for filling openings and no tuition is required.

### **Political Activities**

EDUPRIZE ensures that it does not use its forum or student base to promote any political activities or position

### **EL Information**

Arizona is a very diverse state with many different cultures and languages. EDUPRIZE is no different, we have about 100 students that have a language other than English within the home. The languages represented include Spanish, German, Russian, Serbian, French, Arabic, Urdu, Korean and Cantonese, to name a few.

Any student that has another language, either spoken at home or by the student, must take a proficiency exam in English. Students who do not test proficient in English are called ELs, or English Learners. These students qualify for extra help during the day to improve English fluency. EDUPRIZE uses 2 different models of instruction, both include SEI (Structured English Immersion) endorsed teachers using English Language Proficiency (ELP) standards. In K-6th grade, we have a 2 hour SEI model, where students remain in their classroom and the teacher uses SEI strategies to increase English language proficiency.

This model will focus on Reading, Writing, Listening, Speaking and Grammar standards that are incorporated within the classroom instruction and small group lessons. In the 7-12th grades, students are in a pull-out program with an SEI endorsed teacher that provides 50 minutes of focused English instruction to EL students. Both programs use ELD (English Language Development) as well as ELP standards that tie the English language objectives to content instruction. Students are monitored in their English fluency progression each quarter and then are reassessed in Quarter 3 through a state test called the AZELLA-Arizona English Language Learner Assessment. As always, EDUPRIZE teachers do a remarkable job on helping our ELs increase their English proficiency each year.

**[Back to Main Menu](#)**

