

EAGLES EDITION

Gilbert School News | PreK-6th



Principal's Message



Robin Yeargain

Dear EDUPRIZE Parents,

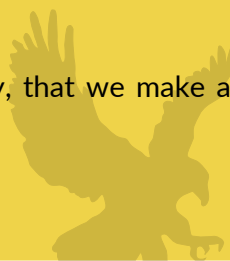
Week 2 and we are off and running strong! Classes are in full swing, with engaging instruction that follows state standards to prepare students for success! We have a jam packed quarter with lots of exciting events and learning opportunities.

Here are the biggies:

- Spring Spectacular! Since we had our Boosterthon in October, we are having our school wide community event on Friday, February 23rd. It will be like a giant carnival with games, foods, activities, bouncy houses, a talent show, our basket raffle (it'll be a silent auction this year) and much more! It's going to be AWESOME!! We do need your HELP to make sure the night runs smoothly. We need volunteers for running stations, selling food and tickets, and we need 1 coordinator from every class to collect items for their class basket. Please email PTN@eduprizeschools.net if you have any questions or if you are ready to help!
- Conference Week is February 12th-16th! The home-school connection is so important for student success. Please register on the teacher's sign up genius to find out specifically how your child is progressing, giving you a strong academic picture of your child. We did benchmark testing (Galileo and STAR) in January and have data to share with you. Please, make it a priority to attend!
- Clubs - we are beginning to offer more as interest builds. Check out the newsletter each week, as they seem to fill up quickly!
- Field trips - we have a lot of field trips scheduled this quarter. Field trips are always correlated to our Cottages and they are a great extension of what the students are learning.
- LEVEL UP is our theme this year and the focus of this quarter is strategy. Students are challenged to strategize in the areas of academia and in character. Each week students and classes earn points in different areas, with the top earning classes getting to be the participants in a game at the assembly. Our goal is for every student, each day to challenge themselves to do and show their best work/effort.

Thank you for all that you do to support our work with your children. It is together, as a community, that we make a difference.

Kindly,
Robin



QUICK REFERENCES

Page Jumps

New Feature:

Click the topic you want and jump straight to that page

[Calendar](#)

[SEL Corner](#)

[Athletic Department](#)

[PTN](#)

New

[Spring Spectacular](#)

New

[Project Exploration](#)

[Parent's Night](#)

[NJHS School Donations](#)

[6th Grade Vaccine Mandate](#)

[Enrollment](#)

[Kinder Roundup](#)

[Baby Doll Donations](#)

[School of Choice Event](#)

[Health Office News](#)

[Job Opportunities](#)

[Student Accident Insurance](#)

Helpful Links

[Gilbert's Parents
Resource Page](#)



[K-6th Regular
Day Calendar](#)

[K-6th TOPS
Day Calendar](#)



[K-6th Events
Calendar](#)

[Website](#)

[Facebook](#)

[PTN
Website](#)

[PTN
Facebook](#)

Tomorrow

CALENDAR

This Month

JANUARY

20th: AZ School of Choice Night
6 - 8PM

23rd: Parents Night at 5pm
Future 7th Graders

26th: Student Council Meeting

26th Sign-up Genius goes live
K-6 Conferences

29th: Project Exploration Chaperone Meeting

30th: Campus Tour (PreK-12th Grade)
5 p.m. Bldg. 3 Lobby & Theater

Next Month

FEBRUARY

2nd: Sign Up Genius goes live
Kinder TOPS Conferences

8th: Board Meeting
On Queen Creek Campus

9th: Student Council

12th-16th: Conference Week
Kinder - 6th Grade

15th: Early Release
Regular Day Students Only

16th: Project Exploration Departure
(2/16-2/18 Project Exploration Trip)

19th: No School
Presidents' Day Holiday

20th-23rd: Conference Week
Kinder TOPS

22nd: Spring Pictures
Regular Day Students

23rd: Spring Pictures
TOPS Students AND Sports Pictures

23rd: Spring Spectacular

27th: Campus Tour (PreK-12th Grade)
5 p.m. Bldg. 3 Lobby & Theater

[Back to Main Menu](#)

SEL CORNER

(SOCIAL AND EMOTIONAL LEARNING)

Dear EDUPRIZE families,

Here is an important point shared by PE Coach Rob McLeland from Physical and Health Education America about the mind and body connection.



Heather Vehon
Dean of Students K-6th

Our thoughts, feelings, beliefs, and attitudes can positively or negatively affect our biological functioning. In other words, **our minds can affect how healthy our bodies are. The opposite is true as well.** The things we do with our physical body (e.g. what we eat, how much we exercise, how many hours of sleep we get) can impact our mental state, positively or negatively. This results in a complex relationship between our mind and body.

So next time you do something active with your child(ren) ask them how they are feeling and how the activity impacted their mood (and check how you feel too).



Sincerely,
Heather Vehon
Dean of Students
Eduprize Schools
Gilbert Campus
heather.vehon@eduprizeschools.net

[Back to Main Menu](#)

ATHLETIC DEPARTMENT

Upcoming Week Sports Schedule At A Glance:

Please check AZCAAPREPS.COM for up to the date game schedule and location.

ALL Athletic fees need to be paid by the first game. Unpaid fees can lead to not playing in games.

All paperwork should be in for all sports at this time. Please with your coach to be sure all your paperwork is turned in.

This is the schedule for January 22nd-27th

Cornhole Practice:

Monday & Wednesday 3:30 - 4:45, B4 Outside Basketball Courts

AM practice on Wednesday only

Cornhole State Tournament Saturday (1/27) in B4 @ 10 am

Boys JV Basketball Practice Schedule:

Monday 4:30-6:00 in B4

Thursday 4:30- 6:00 in B3

Boys JV Basketball GAMES:

Tues. 1/23- EVAC @ 7pm (Legacy Sports Complex Field house B court 13)

Wed. 1/24 - Heritage Maricopa @ 5pm (41000 W Heroes Way, Maricopa)

Boys Varsity/OPEN Basketball Practice Schedule:

TBD by Coach Ashton

Boys OPEN Basketball GAMES:

Friday (1/26) @ Premier Prep @ 7pm @ Sporting Chance Center (2100 W Curtis Rd, Tucson)

Boys Varsity Basketball GAMES:

Tuesday (1/23) @ AZ Compass @ 4pm (2020 N Arizona Ave, Chandler)

Wednesday (1/24) @ Heritage Maricopa @ 6:30 (41000 W Heroes Way, Maricopa)

Thursday (1/25) @ South Point High @ 6:15 pm (1445 W Baseline Rd, PHX)

Girls JV Basketball Practice Schedule:

Tuesday & Thursday 5:00-6:30 in B4

Wednesday 5:00-6:30 in B3

Girls JV Basketball GAMES:

Fri. 1/26 - EVAC @ 4pm (Legacy Sports Complex Field house B court 13)

Girls Varsity Basketball Practice Schedule:

Monday 5:30-7:30 in B3

Tuesday & Thursday 5:30- 7:30 in B4

Saturday @ 6pm in B4

Girls Varsity Basketball GAMES:

Wed. 1/24- Glenview College Prep @5:30 (4386 W Bethany Hone Rd, Glendale)

Fri. 1/26- EVAC @5:30 (Legacy Sports Complex Field house B court 13)

JH Boys Flag Football Practice:

Tuesday & Wednesday 3:30- 4:45

JH Boys Flag Football Games:

Monday (1/22) Vs Canyon State @ 4 pm on our field

Thursday (1/25) Vs EDUPRIZE @ 4pm on our field

You can find all forms listed here:

<https://www.eduprizeschools.net/gilbert-sports-and-extracurricular-activities>

Make sure you wear proper attire and bring plenty of water.

If you have any questions please email the Athletic Director

Clint.ambos@eduprizeschools.net

[**Back to Main Menu**](#)

PTN Notes

The 23-24 PTN board:

President: Lena Freeman

Co-Vice Presidents:
Penelope Harrell & Kim Wood

Secretary: Tiffany Stradling

Treasurer: Jessica Griesi

Thank you to those who attended the meeting in person and virtually. And a special thank you to the many parents and teachers that helped us make the Thanksgiving Food Drive and the Christmas Toy Drive a success; we couldn't have done it without you so we appreciate your support!

PTN's biggest job is FUNDRAISING, which enables us to support the students, staff and school.
Our second largest fundraiser is our Spring Spectacular!

EVENTS:

****** ALL of these events are ONLY made possible by having volunteers.
Please please reach out to us at ptn@eduprizeschools.net to help.

Spring Spectacular – Happening on February 23rd. Our goal is to raise \$100k, which will allow us to sponsor more clubs and will also increase the money we put in the teachers' allotment for classroom activities, and help us continue to purchase new technology for the classrooms. Tickets will be available soon; they'll be \$5 in advance or \$10 at the door. With activities such as bounce houses, carnival games, face painting, pony rides, a petting zoo, a talent show, a visit from Elsa and Spiderman, raffle prizes and more!!

If you are interested in **volunteering** to help please click [HERE](#):

If you are interested in becoming a **vendor** please email us at ptn@eduprizeschools.net for more information.

****Basket coordinators** are still needed! If you are interested in becoming one for your child's class please email us and we'll send you all the information to help you put together a phenomenal basket. It's easier than you think!

Peter Piper Pizza – There will be a fundraiser at Peter Piper Pizza on February 13 from 3-9pm. Stop in during those hours to eat and play games and they will donate 15% of sales to the school.

Yearbook – The yearbook committee needs photographs of special events & sports games for Kinder through 6th grade. If you have great photographs, please email them to eduprizeyearbookchair@gmail.com for a chance to have them featured in the yearbook!

Did you know you can earn money for Eduprize simply by shopping at Fry's?

Just link your Fry's Rewards card online with Eduprize.

Go to: www.fryscommunityrewards.com & sign in. Then click Community Rewards and find your organization (Edu-Prize Parent Teacher Organization) or enter our number: HM079.

If you are interested in getting involved with PTN and volunteering at school events, please email us at ptn@eduprizeschools.net

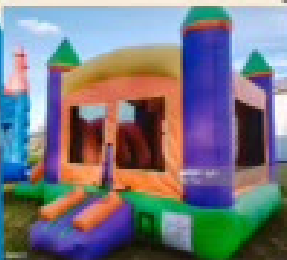
[Back to Main Menu](#)

EDUPRIZE

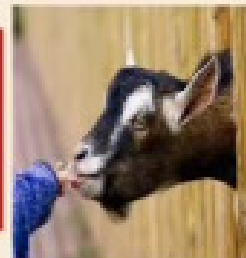


**Spring
Spectacular**

FEB 23, 2024 4-9PM



**FOOD / PETTING ZOO / GAMES/
BOUNCE HOUSES / VENDORS / DJ
AND MUCH MUCH MORE!!!!!!**



TICKETS WILL BE ON SALE SOON!



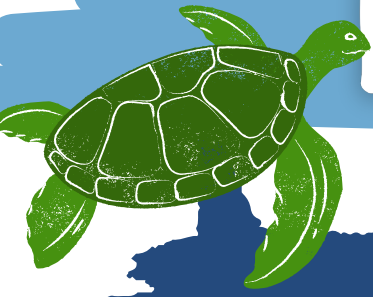
**EDUPRIZE 'S Students
Got- Talent
will be Performing**



**580 W. Melody Ave
Gilbert A. 85233**

PROJECT EXPLORATION

Countdown to Departure:
28 days (as of 1/19/24)



Project Exploration

Getting prepped for the trip:

- Students will need some money for lunch (about \$50) at Seaworld on Saturday and dinner (about \$30) on Sunday. SeaWorld is CASHLESS, so the best option is to purchase prepaid Visa gift cards. If your student is interested in buying souvenirs, make sure to keep that dollar amount in mind too!

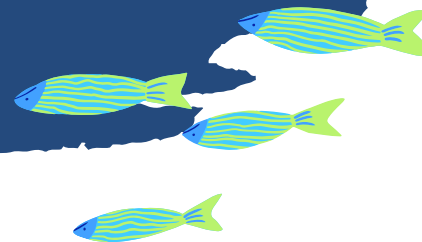
Important Dates:

Jan. 29th: 5th Grade Mandatory Student Meeting (B2 R72 Mr. Fitz)
They will be during the traditional day lunch time from 12:20-1:00pm. Students will have time to pick up their hot lunch and go to their assigned meeting room. AM TOPS will come to carpool immediately after the meeting, and PM TOPS may need to miss some of their class time.

Jan. 29th: Mandatory Chaperone Meeting in (B2 RM53 Schott)
at 5:30pm.

Jan. 30th: 6th Grade Mandatory Student Meeting (B2R93 Ms. Jimison)
They will be during the traditional day lunch time from 12:20-1:00pm. Students will have time to pick up their hot lunch and go to their assigned meeting room. AM TOPS will come to carpool immediately after the meeting, and PM TOPS may need to miss some of their class time.

Please email Ms. Schott if you have any questions.



PARENTS NIGHT

FOR FAMILIES OF INCOMING 7TH GRADERS.

Meet your 7th grade teachers, explore our curriculum, and see WHY you should attend EDUPRIZE next school year!

January 23, 2024
5:00pm-6:30pm

Starting in the Building 3 Theater

Same info presented as the December parent night.

[Back to Main Menu](#)

Help your local shelter animals!!

PRE-K/KINDERGARTEN - PAPER
TOWELS

1ST GRADE - CLOROX WIPES

2ND GRADE - HAND SOAP

3RD GRADE - LIQUID LAUNDRY
SOAP

4TH GRADE - COLLARS + LEASHES

5TH GRADE - TOYS

6TH GRADE - NYLABONES

[Back to Main Menu](#)

BRING IN BY THE 26TH!!

CLASS WITH MOST DONATIONS IN WINS
A STUFFED ANIMAL FOR THEIR CLASS!

FUTURE 6TH GRADERS

In preparation for next year, the Arizona Department of Health requires two vaccinations for all students that are 11 years or older entering 6th grade.

- **Tdap**
- **Meningococcal**

Please send a copy of your child's vaccination update to nurse@eduprizeschools.net

See the state mandate [HERE](#)

If you have any questions please feel free to contact the Health Office at (480)813-9537 or email nurse@eduprizeschools.net

[Back to Main Menu](#)

ENROLLMENT

2024-2025

Intent to Return (re-enrollment) for the 2024-25 school year is now open!

Click [HERE](#) to complete the form today.

Intent to Return for the 2024-2025 school year is open now until January 15th. The LIFE Fund Fee for next school year will be discounted to \$50 per returning student during this same time frame!

Please contact the enrollment office with any questions: gilbertenrollment@eduprizeschools.net or (480) 813-9537 x1030.

[Back to Main Menu](#)

Kindergarten

Roundup!

Join us:

Thursday,
February 29th
4:30 - 6:00 pm



CHECK US OUT!

Bring your incoming kindergartner to participate in engaging activities featuring our amazing, hands-on curriculum and teachers. You will get a glimpse of Kindergarten life at EDUPRIZE and learn why our students SOAR!

FREE EVENT!

- Children will participate in FUN curricular stations taught by our fabulous kindergarten teachers
- Parents will receive information and guidance regarding program options and registration for the 2024-25 school year
- Open house style

EDUPRIZE Gilbert Campus
Building 1
580 West Melody Avenue
Gilbert, AZ 85233

QUESTIONS?

480-813-9537 x1030

gilbertenrollment@eduprizeschools.net

**LEAP into
Kindergarten
at our award-
winning school!**



[Back to Main Menu](#)

Preschool Donations



Our Pre-K class is in need of some donations. We are looking for new or slightly used...

Baby dolls & accessories
or

Dress up clothes & accessories for students to wear.



Please bring all donations to building 1 front desk to be left for Mrs. Louviaux's class.



Join us for a **FREE** family night out!

Saturday, January 20th
AZ Children's Museum of Phoenix
215 N 7th St, Phoenix, AZ 85034
from 6:00pm-8:00pm

This is a free school fair where you can learn more about education options for your family. There will be refreshments and fun activities, like face painting, photo booths and more!

Sign up HERE

www.phoenixschoolfair.com

**Eduprize will have it's own booth there.
Make sure to stop by and say hi.**

[Back to Main Menu](#)

Health Office Updates



IMPORTANT HEALTH OFFICE INFORMATION

As illness or health situations occur throughout the school year, it may be necessary for medication to be administered at school. All prescribed AND over the counter medication (i.e. Tylenol, Ibuprofen, Benadryl, etc.) will need to be checked into the Health Office, along with a [Prescription and Non-prescription Medication Consent](#) form which requires a doctor's signature. These forms can be found on our website www.eduprizeschools.net under the Parent & Student Resources>Health Office Forms, or you can just click on any of the links provided in light blue.

- **HEALTH ACTION PLAN:** Please be aware that children who have asthma, diabetes, or seizures will need an action plan provided by their health care provider, ALONG with the signed [Prescription and Non-prescription Medication Consent](#) form .
- **ASTHMA:** If your child has asthma, an asthma action plan will need to be provided by your doctor ALONG with a signed [Prescription and Non-prescription Medication Consent](#) form .
- **ALLERGIES:** Allergies that require an EpiPen will need an [Anaphylaxis Management Packet](#) filled out and signed by a doctor along with the [Prescription and Non-prescription Medication Consent](#) form .
- **MEDICATION:** As a reminder, ALL medications need to be checked in at the Health Office. Students should not carry medications in their backpacks. A [Prescription and Non-prescription Medication Consent](#) form will also need to be filled out for any medications, prescription or non prescription.

We cannot accept ANY medications without these forms.

Any questions can be directed to the Health Office staff at (480) 813-9537 option 7

Medication Authorization

If you would like your student to be able to access medication at school, please complete the authorization [FORM](#) and return to the health office.



[Back to Main Menu](#)

NOW HIRING SUBSTITUTES

We offer:

Competitive pay - \$20.75/hour (teacher certified)
\$19.50/hour (sub certified)
\$17/hour (no certification)

Flexible Schedules - Traditional day and AM/PM TOPS

Range of Classes - Grades PreK-12th grade and specialty classes like dance, PE, computers, and much more.

Incredible Community - Our staff, students, and parents are a welcoming and loving community you will enjoy being a part of.

IF INTERESTED PLEASE EMAIL

emily.yeaman@eduprizeschools.net



**WE'RE
HIRING!!**

COME AND JOIN OUR AIDE STAFF !

LOOKING FOR HARD WORKING PEOPLE WHO LOVE SAFETY AND WORKING WITH KIDS!

TIMES NEEDED ARE:

7:00-8:05 A.M.

10:20 A.M.-1:10 P.M.

2:30-3:40 P.M.

-GREAT FOR STAY AT HOME PARENTS, RETIREES AND COLLEGE STUDENTS
OVER 21 YEARS OR OLDER.

- WE ARE VERY FLEXIBLE WITH SCHEDULES.

- FRIENDLY ENVIRONMENT

JOB TYPE: PART-TIME 19HRS A WEEK



IF INTERESTED PLEASE CONTACT:

TYM BRITTON

AIDE SUPERVISOR

CAR LANE COORDINATOR

LUNCH PROGRAM COORDINATOR

EDUPRIZE GILBERT

PHONE: (480) 813-9537 EXT.1270

EMAIL: TYM.BRITTON@EDUPRIZESCHOOLS.NET

[Back to Main Menu](#)



Add **www.studentinsurance-kk.com** **to your school's website**

Adding a link to your school's website may make it easier for parents to enroll their students in your endorsed student insurance plan. Our website, www.studentinsurance-kk.com, provides easy online enrollment. You can choose from simply adding a simple text link or something more descriptive

Suggested samples for adding www.StudentInsurance-KK.com to your school/district website:

As you select a listing from the samples below, please set up your choice with a hyperlink to <http://www.studentinsurance-kk.com>

1. Simple Text Options (with hyperlink)

example a. **Enroll in Student Insurance Here**

example b. **Quote/Buy Student Insurance Online**

2. Descriptive Text Options (with hyperlinks)

example a. **Student Accident Insurance** and the following paragraph either directly below or as a popup option. The paragraph also contains 2 hyperlink options (in bold).

*Our school/district has selected the **Student Insurance Plan** from K&K Insurance Group to make reliable coverage available to parents. If you don't have other insurance, this plan may be a resource to consider. Additionally, even if you have other coverage, this plan can help fill expensive "gaps" caused by deductible and co-pays. Coverage may be purchased at any time during the school year by visiting www.studentinsurance-kk.com.*

example b. **Student Accident Insurance** and the following paragraph either directly below or as a popup option. The paragraph also contains 1 hyperlink option (in bold).

*Our school/district has selected the **Student Insurance Plan** from K&K Insurance to make reliable coverage available to parents. Coverage may be purchased at any time during the school year by visiting www.studentinsurance-kk.com.*

If you do not have the ability to add links to your website, simply pass this sheet along to the technology team responsible for your school/district website. You may encourage individual schools to do so as well. If you need additional assistance, please send an email to info@studentinsurance-kk.com

[Back to Main Menu](#)