

EAGLES EDITION

Gilbert School News | PreK-6th



Principal's Message



Robin Yeargain

Dear EDUPRIZE Parents,

It was wonderful to see so many parents on campus for conferences...thank you for taking the time to establish this partnership. Kindergarten parents, you will be meeting this upcoming week, and we are excited to share with you!

At conferences, you receive a lot of information, including baseline data and a picture of how your child is doing right now, as well as what are some of the expectations for growth. This can be overwhelming and may even seem like there is too much to do. We know that families are busy and that life is very full. We also know that how children do in elementary years is a great predictor of future years. So now what?

The most important thing you can do to help your child is **set a time each day to:**

- ASK about the day--what was a struggle or an accomplishment
- Complete homework...there is always math, math facts and spelling
- READ...20 minutes a day will help with fluency and comprehension, PLUS earn Water Day in May!

This interest in the child's work shows value and purpose for learning.

If setting a routine of completing school work hasn't been something you've done in the past, level up (our theme this year) and start by following the few suggestions listed above!

Some items I've noticed lately that I would like to address are:

- Drive Lanes are used for ALL students to be dropped off and picked up. Students should never be dropped off in the parking lot or expected to walk across the parking lot. Everyone needs to use their assigned lane for pick up. Please take the extra few minutes to drop off/pick up the correct way. Model integrity, which is doing the right thing, even when no one is looking.
- Drive lanes are 10-15 MPH, please watch your speed.
- Respect for the aides...these staff members are there for the safety of our children. If you are asked to move up or come back around because you are too early, please show respect and follow their directions. Their intentions are kind and are aimed at efficiency.

Thanks again for your continued support and commitment to your child and education.

With Labor Day on Monday, it reminds us that we (including your children) have worked hard, and we celebrate our achievements from the past and look forward with excitement to what we can do in the coming year.

I wish you a wonderful, fun and relaxing 3 day weekend!

Kindly,
Robin

QUICK REFERENCES

Calendar Items

SEPTEMBER

4th: No School

DON'T FORGET



5th-8th: Conference Week

Kinder TOPS

25th-29th: Spirit Week

26th: Cottage Fair

K-3rd Grade Regular Day. & K-6th PM TOPS

27th: Cottage Fair

4th-6th Regular Day & K-6th AM TOPS

Helpful Links

[Gilbert's Parents
Resource Page](#)



[K-6th Regular
Day Calendar](#)

[K-6th TOPS
Day Calendar](#)



[K-6th Events
Calendar](#)

[Website](#)

[Facebook](#)

[PTN
Website](#)

[PTN
Facebook](#)

SEL CORNER

(SOCIAL AND EMOTIONAL LEARNING)

Dear EDUPRIZE families,

Let's talk about giving kids (and ourselves) some grace with a concept called Self Compassion. The pioneer behind this research is Dr. Kristin Neff. She talks about how, it is often easier for us to have compassion for others (like kids and their behavior struggles) than it is for us to give OURSELVES a break about how we may have handled a certain situation in a way that didn't feel good to us.



Heather Vehon
Dean of Students K-6th

Being a harsh judge or critic of your actions only adds a layer of shame on top of an already hard situation. So when a behavior situation with kids gets hard, try these steps to show compassion toward yourself after the moment has passed:

- Use **mindfulness** to turn TOWARD the pain. Think of the troubling situation, and relate to it with compassion such as, "That was really hard. This feeling hurts."
- Tap into our **common humanity**. Remember you are NOT alone! Nothing is wrong with you, this is part of being human.
- Show **kindness to yourself** as you would a friend. Consciously shift your self-talk to include phrases like, "You did the best you could. I care about you. I am here for you."
- Want to read more about Self Compassion? Check out this [link](#).

Sincerely,
Heather Vehon
Dean of Students
Eduprize Schools
Gilbert Campus
heather.vehon@eduprizeschools.net



ATHLETIC DEPARTMENT

Upcoming Week Sports Schedule At A Glance:

Please check AZCAAPREPS.COM for up to the date game schedule and location.

ALL Athletic fees need to be paid by the first game.

Unpaid fees can lead to NOT playing in games.

****Sports photos will be on Friday Sept. 15 starting at 12:15****

Upcoming Season 2 Sports for Junior High (5-8 grade):

Girls Flag Football ~ Coach Forbes ~ Tryouts will be held before Fall Break.

Girls Softball ~ Coach Aguilera ~ Tryouts will be 9/13 and 9/19 after school.

****In order to be eligible for tryouts, please have all paperwork turned in before tryouts start****

VOLLEYBALL PRACTICES THIS WEEK:

Varsity: Tuesday & Thursday 3:30-5:00 in B4 Gym

JV: Wednesday 3:30-5:00 in B3 Gym

Junior High A: Thursday 3:45-5:45 in B3 Gym

Junior High B: NO practice

Elementary: Tuesday 3:10-4:30 in B3 Gym

VOLLEYBALL GAME SCHEDULE:

Elementary- NO games this week

Junior High A- Wednesday (9/6) 4:30 Home vs EVAC In B4

Friday (9/8) @7pm vs Basis Mesa in B4 gym AND @8pm vs JO Combs in B4 gym

Saturday (9/9) 9:15am vs Victory Collegiate Academy @ PanAmerican Charter school

Check Zorts app, keyword "Spike It" for the rest of schedule for the day.

Junior High B- Wednesday (9/6), 5:30 vs NFL YET in B4 gym

JV- Tuesday (9/5) 5pm vs Ville De Marie in B4 gym

Varsity- Wednesday (9/6), 6:30 @ Western School of Sci & Tech

Friday (9/8), 6pm Vs South Ridge High @ BASIS South Chandler

Saturday (9/8) Games will depend on how team does Friday

Check Zorts app, keyword "Spike It" for the rest of schedule for the day

FOOTBALL PRACTICE SCHEDULE:

Tuesday, Wednesday and Thursday 6am - 7:10 am

FLAG FOOTBALL GAMES:

Thursday (9/7), 4pm and 5 pm vs ASU Prep @ Freestone Park N/S Field

SOCCER PRACTICE SCHEDULE:

Tuesday 3:30 - 5pm

SOCCER GAME SCHEDULE:

Thursday (9/7) @ 4:30pm @ Leading Edge Academy

CROSS COUNTRY is open to ALL students 5th-12th grade (We are still accepting runners!).

Practice ~ Monday and Wednesday 6am - 7am

You can find all forms listed here:

<https://www.eduprizeschools.net/gilbert-sports-and-extracurricular-activities>

Make sure you wear proper attire and bring plenty of water.

If you have any questions please email the Athletic Director

Clint.ambos@eduprizeschools.net

PROJECT EXPLORATION



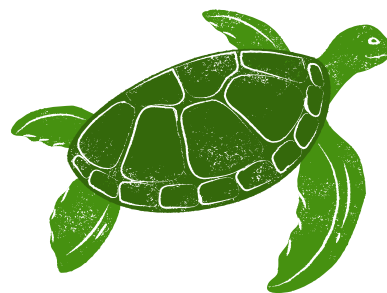
Attention 5th & 6th Graders!

The plans are being established for the next EDUPRIZE Project Exploration trip! We will be attending the Oceanography trip in February! Many more details will be coming soon.

The first step is for parents to attend the informational parent meeting on Monday, September 11th at 5:30pm in the building 3 theater. If your child is considering this trip, a parent **MUST** attend this meeting. If a parent doesn't attend this parent meeting, the student will not be qualified to attend.

Last year's trip was fantastic and we are thrilled to start planning this one!

Countdown to Departure:
168 days (as of 9/1/23)



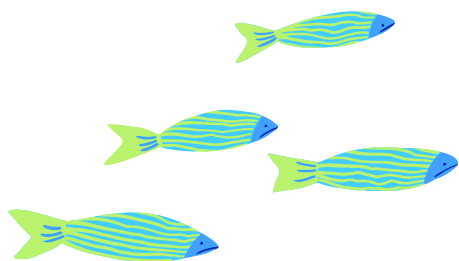
Oceanography
February 16-18, 2024

Important Dates:

Monday, September 11, 2023

Information Parent Meeting at 5:30pm
in B3 Theater (parents only)

**Applications handed out at
the end of the meeting.**



Please email if you have questions.
susan.jimison@eduprizeschools.net

Fingerprint cards

If you are available to chaperone, you might want to consider getting your fingerprint clearance card now so you are ready. Here is the [link to DPS](#) for more information.

Student essays

Students are asked to turn in an essay when they turn in their application. Things they should include in this essay are:

1. Why do they want to attend this trip?
2. Why do they feel they have "earned" this trip?
3. How they will contribute to everyone having a wonderful trip.
4. How their behavior exemplifies EDUPRIZE and how they will be a great reflection of our school.

2023-2024

L.I.F.E. FUND DUE

LIFE Funds are due September 1st, 2023 in order for students to participate in their class field trips this school year. If you have not already done so, please pay LIFE Funds through you Infinite Campus parent portal.

Lab Instructional Field Experiences (L.I.F.E.) provides special opportunities and presentations on and off campus. We aim to bring the highest quality of experiences, therefore, L.I.F.E. Fund fees are used to cover the cost. Please click on the instructions below on how to pay this fee via your parent portal.

[Click Here
for instructions
on how to make
payments via
Infinite Campus](#)

[Infinite
Campus
Portal](#)

Click on "School Store" in the menu

ENROLLMENT

2024-2025

Do you have an incoming Kindergartner, Pre-Kindergartner, or 1st-12th grade sibling to enroll for next school year?

NOW is the time to submit your enrollment interest form for the 2024-2025 school year!

Here is the link to complete the form today:

<https://www.eduprizeschools.net/apply-gilbert/>

Please do not delay! Siblings receive priority registration, but every year we have families who miss the priority window and the opportunity to secure their preferred program/schedule. Additional details regarding registration will be distributed at a later date to families who have completed the interest form.

**Please contact the enrollment office with any questions:
gilbertenrollment@eduprizeschools.net or (480) 813-9537 x1030.**



We are ready to get this year started!
If you are interested in helping plan or
volunteer at school events, please reach
out to your child's teacher or PTN at
ptn@eduprizeschools.net

HONORING OUTSTANDING ARIZONA TEACHERS

3

SILVER
APPLE



Nominate your teacher

for the Silver Apple Award.

NOMINATIONS ARE ACCEPTED THROUGH MARCH 15, 2024

Silver Apple
Award
Rules

There is no doubt that EDUPRIZE has some of the most outstanding teachers in the state! The 2023-2024 Silver Apple Award is a local teacher recognition program, sponsored by Channel 3 News and Arizona Bank & Trust. Eight nominated teachers are rewarded each year with a feature on 3TV and special prizes. The nominations are completed by students and signed by the principal. You can print an application [here](#).

Silver Apple
Award
Nomination
Form

In years past, we have had three Silver Apple Award winners at EDUPRIZE! If this award does not sound like the perfect recognition program, please take a look on the internet for other programs honoring educators. In addition, [greatschools.org](https://www.greatschools.org) is a great place to share your support for your child's teacher and the school!

Health Office Updates



IMPORTANT HEALTH OFFICE INFORMATION

As illness or health situations occur throughout the school year, it may be necessary for medication to be administered at school. All prescribed AND over the counter medication (i.e. Tylenol, Ibuprofen, Benadryl, etc.) will need to be checked into the Health Office, along with a [Prescription and Non-prescription Medication Consent](#) form which requires a doctor's signature. These forms can be found on our website www.eduprizeschools.net under the Parent & Student Resources>Health Office Forms, or you can just click on any of the links provided in light blue.

- **HEALTH ACTION PLAN:** Please be aware that children who have asthma, diabetes, or seizures will need an action plan provided by their health care provider, ALONG with the signed [Prescription and Non-prescription Medication Consent](#) form .
- **ASTHMA:** If your child has asthma, an asthma action plan will need to be provided by your doctor ALONG with a signed [Prescription and Non-prescription Medication Consent](#) form .
- **ALLERGIES:** Allergies that require an EpiPen will need an [Anaphylaxis Management Packet](#) filled out and signed by a doctor along with the [Prescription and Non-prescription Medication Consent](#) form .
- **MEDICATION:** As a reminder, ALL medications need to be checked in at the Health Office. Students should not carry medications in their backpacks. A [Prescription and Non-prescription Medication Consent](#) form will also need to be filled out for any medications, prescription or non prescription.

We cannot accept ANY medications without these forms.

Any questions can be directed to the Health Office staff at (480) 813-9537 option 7

Medication Authorization

If you would like your student to be able to access medication at school, please complete the authorization [FORM](#) and return to the health office.



Give us a Review!



Hey everyone!

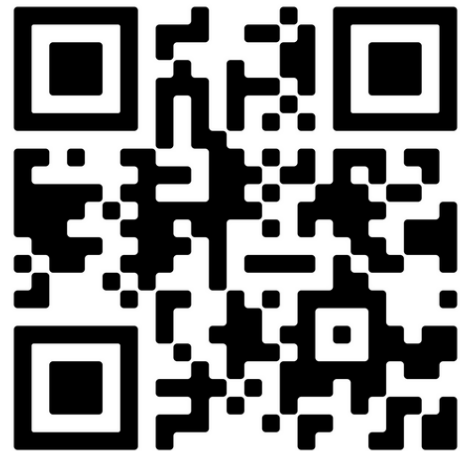
Positive reviews from awesome parents like you help other parents just like you to feel confident about choosing EDUPRIZE. Could you take 60 seconds and share your happy experiences?

We will be forever grateful. Thank you in advance for helping us out!

Use the QR Codes to write a review
for EDUPRIZE Schools on
Niche.com and Greatschools.org



Niche.com



Submit a Review

Campus Students & Campus Parents

Logging into the App

1. Download the app at the [App Store](#) or [Google Play](#).
2. Search for your District Name (Eduprize) and State. Select your district from the list.
3. Enter your Username and Password. (If you haven't create an account, please email: april.talley@eduprizeschools.net)
4. Click Log In!

Logging in from a Web Browser

1. Visit <https://eduprizeaz.infinitecampus.org/campus/portal/parents/eduprize.jsp>
2. Enter your Username and Password. (If you haven't create an account, please email: april.talley@eduprizeschools.net)
3. Click Log In!





COME AND JOIN OUR AIDE STAFF !

LOOKING FOR HARD WORKING PEOPLE WHO LOVE SAFETY AND WORKING WITH KIDS!

TIMES NEEDED ARE:

7:00-8:05 A.M.

10:20 A.M.-1:10 P.M.

2:30-3:40 P.M.

**-GREAT FOR STAY AT HOME PARENTS, RETIREES AND COLLEGE STUDENTS
OVER 21 YEARS OR OLDER.**

- WE ARE VERY FLEXIBLE WITH SCHEDULES.

- FRIENDLY ENVIRONMENT

JOB TYPE: PART-TIME 19HRS A WEEK

IF INTERESTED PLEASE CONTACT:

TYM BRITTON

AIDE SUPERVISOR

CAR LANE COORDINATOR

LUNCH PROGRAM COORDINATOR

EDUPRIZE GILBERT

PHONE: (480) 813-9537 EXT.1270

EMAIL: TYM.BRITTON@EDUPRIZESCHOOLS.NET



NOW HIRING

SUBSTITUTES

We offer:

Competitive pay - \$20.75/hour (teacher certified)
\$19.50/hour (sub certified)
\$17/hour (no certification)

Flexible Schedules - Traditional day and AM/PM TOPS

Range of Classes - Grades PreK-12th grade and specialty classes like dance, PE, computers, and much more.

Incredible Community - Our staff, students, and parents are a welcoming and loving community you will enjoy being apart of.

IF INTERESTED PLEASE EMAIL

emily.yeaman@eduprizeschools.net



EDUPRIZE Schools, LLC shall provide an educational environment that treats all students with dignity and respect. Every homeless student shall have access to the same free and appropriate educational opportunities as students who are not homeless. This commitment to the educational rights of homeless children, youth, and unaccompanied youth, applies to all services, programs, and activities provided or made available.

McKinney-Vento Definition of Homeless:

The term “homeless children and youth”— means individuals who lack a fixed, regular, and adequate nighttime residence [\[42 U.S.C. § 11434a\(2\)\]](#).

A student may be considered eligible for services as a “Homeless Child or Youth” under the McKinney-Vento Homeless Assistance Act if he or she is presently living in one of the following situations:

- sharing the housing of other persons due to loss of housing, economic hardship, or a similar reason,
- living in motels, hotels, trailer parks, or camping grounds due to the lack of alternative adequate accommodations,
- living in emergency or transitional shelters; or are abandoned in hospitals,
- have a primary nighttime residence that is a public or private place not designed for or ordinarily used as a regular sleeping accommodation for human beings,
- living in cars, parks, public spaces, abandoned buildings, substandard housing, bus or train stations, or similar settings, or
- is a migratory child who qualifies as homeless for the purposes of this subtitle because the children are living in circumstances described above.



To remove educational barriers for children and youths experiencing homelessness, the McKinney-Vento Act mandates the following: **Immediate Enrollment:** Documentation and immunization records cannot serve as a barrier to the enrollment in school [42 U.S.C. §11432(g)(3)(C)].

School Selection and Maintained Enrollment: McKinney Vento eligible students have a right to select from the options outlined below. Students may remain enrolled in their selected schools for the duration of homelessness, and until the end of the academic year upon which they are permanently housed or enroll the child or youth in any public school that non-homeless students who live in the attendance area in which the child or youth is living are eligible to attend. [42 U.S.C. §11432(g)(3)(A), 42 U.S.C. §11432(g)(3)(B) and 42 U.S.C. §11432(g)(3)(I) (i)].

School of Origin	School of Residency
The school the student attended when permanently housed	The school in the attendance area in which the student currently resides
The school in which the student was last enrolled	

Transportation Services: McKinney-Vento eligible students attending their School of Origin have a right to transportation to and from the School of Origin [42 U.S.C. §11432(g)(1)(J)(iii)].

Participation in Programs: McKinney-Vento eligible students are guaranteed the right to services comparable to services offered to other students in the school [42 U.S.C. §11432(g)(4) & (6)(iii)].

Unaccompanied Youth Experiencing Homelessness: McKinney-Vento eligible students are guaranteed the right to immediate enrollment without proof of guardianship [42 U.S.C. §11432(g)(1)(H)(iv)].

Access to Extracurricular Activities: Removal of barriers to accessing academic and extracurricular activities for homeless students who meet relevant eligibility criteria [42 U.S.C. §11432(g)(1)(F)(iii)].

Dispute Resolution: If you disagree with school officials about enrollment, transportation, or fair treatment of a homeless child or youth, you may file a complaint with the school district [42 U.S.C. §11432(g)(3)(E)].

Appointment of a Local Homeless Liaison: The McKinney-Vento Act mandates the appointment of a local Homeless Liaison in every school district or local education agency (LEA) to ensure that homeless children and youth are enrolled in and have a full and equal opportunity to succeed in school [42 U.S.C. §11432(g)(1)(J)(ii) and U.S.C. §11432(g)(6)(A)].

For more information, refer to [Arizona Department of Education, Homeless Education, 42 USC CHAPTER 119, SUBCHAPTER VI, Part B: Education for Homeless Children and Youths, and the AZ State ESSA Plan](#). You may also contact:

LEA Homeless Liaison
EDUPRIZE Schools, LLC
580 W. Melody Ave, Gilbert, AZ 85233
(480) 813-9537 x1030
natalie.brunk@eduprizeschools.net

State Homeless Education Program Coordinator
Arizona Department of Education
1535 W. Jefferson Street
Phoenix, AZ 85007
(602) 542-4963
Homeless@azed.gov





Information contained on this form is confidential and used to determine whether a child or youth meets the definition of homeless under the McKinney-Vento Act. The Education for Homeless Children and Youth (EHCY) program as authorized under Title VII-B of the McKinney-Vento Homeless Assistance Act (42 U.S.C. 11431 et seq. Please note, false claims about living situations may affect enrollment.

Section A

Today's date: _____

Name of individual completing this form: _____

Your telephone number: _____ Your email address: _____

Student name: _____

Last school attended: _____ Current grade: _____ Birth date: _____

Do you have additional children attending school in our district? Yes ☐ No ☐

Do you have children of the preschool age? Yes ☐ No ☐

Please provide information about additional children attending school in our district or of preschool age.

Last Name	First Name	Grade	School	District

Address of where the student slept last night: _____

Is this address based on a temporary living arrangement? Yes ☐ No ☐

(Examples: hotel; shelter; transitional housing; sharing the housing of others due to loss of housing, economic hardship, or similar reason; car; park; campsite.)

NOTE: If you checked "No" to the temporary living arrangement, you may STOP here. If you checked "Yes", please continue to the next section.



Section B

Name of the parent/guardian/adult caring for the student: _____

Relationship to the student: _____

If the address you provided in section A is based on a temporary living arrangement, is it due to loss of housing or economic hardship? Yes ☐ No ☐

Please place an "X" in each box that best describes where the student sleeps at night.

☐ In a place that does not have windows, doors, running water, heat, electricity, or overcrowded

☐ Staying with a friend or relative because of loss of housing, economic hardship, or similar reason
(Example: eviction, foreclosure, fire, flood, lost job, divorce, domestic violence, kicked out by parents, ran away from home)

What date did you begin staying here? _____

☐ In a shelter/transitional housing program (name of agency):

What date did you begin staying here? _____

☐ In an unsheltered location (e.g. tent, vehicle, abandoned building, streets, campground, park, bus/train station, or similar place)

Provide the main cross streets of this unsheltered location: _____

☐ In a hotel/motel (name of hotel/motel & address)

What date did you begin staying here? _____

☐ With an adult that is not a parent or court appointed legal guardian

☐ Alone, not in the care of a parent or court appointed legal guardian

☐ None of the above (Please explain): _____

The following signature certifies that the information provided above is accurate. False claims about living situations may affect enrollment.

Signature of Person Providing Information
Parent/Legal guardian/Caregiver/Student

Date

For School Use Only

Please note, the student's cumulative file should not include a copy of this form. **Do not make copies of this form.** If Section B is filled out, please notify the LEA Homeless Education Liaison, and provide the original form to them.

Name of school site personnel who enrolled the student: _____

Please check the housing types that apply:

Sheltered ☐ Doubled-up ☐ Unsheltered/FEMA/Substandard ☐ Hotel/Motel ☐

Unaccompanied youth: Yes ☐ No ☐ Transportation to school of origin needed: Yes ☐ No ☐

Date received
by Homeless
Liaison
