

EAGLES EDITION

Gilbert School News | PreK-6th



Principal's Message



Dear EDUPRIZE Parents,

Robin Yeargain

We are entering the 5th week of school (we are 1/2 way through quarter 1) and things are going well! We will continue our focus on core standards and behavior expectations that allow students to learn. This year, our school rules have been summarized into the acronym SOAR...Self-control, On-task, Achievement, and Respect. Students have been given explicit instruction about SOAR and how it applies to every area and time of day at school.

Daily students are working in small groups, whether it's in reading or math, so that instruction is tailored to meet their different needs. This quarter, students are working on narrative stories in writing, including learning different sentence structures and grammar. We've just finished our school-wide assessments, which will be shared with you at Parent Teacher Conferences starting the week of August 28th.

As you know, with our high expectations within the classroom, teachers need time to prepare lessons that meet all the different needs. We would love your help within the classroom, as the more help you can give with projects or grading, the more time teachers are given to prepare for individual instruction.

I wish you a wonderful weekend and hope to see you around campus soon!

Kindly,
Robin



QUICK REFERENCES

Calendar Items

AUGUST

18th: Sign-up Genius Goes Live
Kinder TOPS Conferences
28th - Sept. 1st: Conference Week
31st: Early Release
Traditional Day Students

SEPTEMBER

4th: No School
Labor Day Holiday
5th-8th: Conference Week
Kinder TOPS
25th-29th: Spirit Week
26th: Cottage Fair
K-3rd Grade Traditional Day. & K-6th PM TOPS
27th: Cottage Fair
4th-6th Traditional Day & K-6th AM TOPS

Helpful Links

[Gilbert's Parents
Resource Page](#)



[K-6th Traditional
Day Calendar](#)

[K-6th TOPS
Day Calendar](#)



[K-6th Events
Calendar](#)

[Website](#)

[Facebook](#)

[PTN
Website](#)

[PTN
Facebook](#)

SEL CORNER

(SOCIAL AND EMOTIONAL LEARNING)

Dear EDUPRIZE families,

So despite your best efforts, your child will lose self-control at times. This may even result in a tantrum, explosive behavior, or aggression. Here are some more tips from Dr. Becky Kennedy for navigating these times.

1. Tantrums are a normal (and even healthy) part of growing up.
2. Put your hand over your heart, take a deep breath, and remind yourself that you have a good kid who is going through a hard time.
3. Know that sometimes you (as a parent) thrive in a tantrum, and sometimes you simply survive it.
4. Repeat to yourself, "Survive now, talk about it later."
5. When the child is calm later, narrate what happened such as, "When I helped your sister first that made you feel awful. You had a lot of energy in your body and you hit her. We will keep working on this together."
6. Practice (and keep practicing) a strategy your child can use in these times, such as, "Hey yesterday when you hit your sister, I noticed that you had a lot of energy in your hands and you didn't know what else to do. Let's practice making tight fists (maybe call it "squeezing the lemons"), and releasing our hands so you can try that next time."
7. Know that replacing these behaviors takes time! You are doing the best you can with the resources you have available to you in that moment.



Heather Vehon
Dean of Students K-6th

Sincerely,
Heather Vehon
Dean of Students
Eduprize Schools
Gilbert Campus
heather.vehon@eduprizeschools.net



ATHLETIC DEPARTMENT

Upcoming Week Sports Schedule At A Glance:

Please check AZCAAPREPS.COM for up to the date game schedule and location.

**ALL Athletic fees need to be paid by the first game.
Unpaid fees can lead to NOT playing in games.**

****Sports photos will be on Friday Sept. 15 starting at 12:15****

VOLLEYBALL PRACTICES THIS WEEK:

Varsity and JV: Monday & Thursday 3:30- 5:00 PM in B4 Gym
Junior High A- Wednesday 3:45- 5:45 in B3 Gym
Junior High B- Wednesday 3:15- 4:45 in B3 Gym
Elementary - Tuesday & Thursday 3:10 - 4:30 in B3 Gym

VOLLEYBALL GAME SCHEDULE:

Elementary- Monday (21) 4:30 vs Leading Edge in B3 Gym
Wednesday(23) 4:30 @ Heritage Academy Gateway
Friday (25) 4pm vs Leading Edge Academy in B4 Gym
Junior High A- Tuesday (22) 4:30 vs Legacy Traditional in B4 Gym
Junior High B- Tuesday (22) 5:30 vs Heritage Academy in B4 Gym
Thursday(24) 5pm @ ALA Ironwood
JV- Tuesday (22) @ 5pm @ Roosevelt Prep Academy (Early release from B4 @ 2:50)
Varsity- Tuesday(22) 6pm @ LFPA
Wednesday(23) @ 4:30 in B4 Gym

FOOTBALL PRACTICE SCHEDULE: Tuesday, Wednesday and Thursday 6am - 7:10 am

FLAG FOOTBALL Games:

Thursday (24) 5:30pm & 6:30pm @ Freestone Park vs Academy with Community Partners
Friday (25) 4 pm & 5 pm @ Flagstaff Christian School (Early Release at 11:30)

SOCCER PRACTICE SCHEDULE: Monday, Wednesday and Thursday at 3:30 - 5PM

SOCCER GAME SCHEDULE:

TUESDAY~ 4:30 Vs Heritage Gateway @ Heritage Gateway Academy
Friday~ 5:30pm @ Tri City Christian

CROSS COUNTRY is open to ALL students 5th-12th grade (We are still accepting runners!).
Practice ~ Monday and Wednesday 6am - 7am

You can find all forms listed here:

<https://www.eduprizeschools.net/gilbert-sports-and-extracurricular-activities>

Make sure you wear proper attire and bring plenty of water.

If you have any questions please email the Athletic Director
Clint.ambos@eduprizeschools.net

PROJECT EXPLORATION



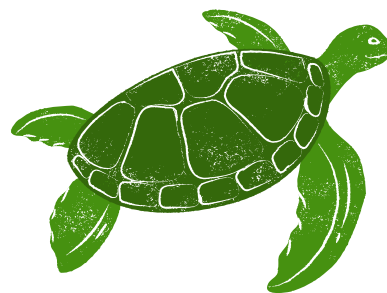
Attention 5th & 6th Graders!

The plans are being established for the next EDUPRIZE Project Exploration trip! We will be attending the Oceanography trip in February! Many more details will be coming soon.

The first step is for parents to attend the informational parent meeting on Monday, September 11th at 5:30pm in the building 3 theater. If your child is considering this trip, a parent **MUST** attend this meeting. If a parent doesn't attend this parent meeting, the student will not be qualified to attend.

Last year's trip was fantastic and we are thrilled to start planning this one!

Countdown to Departure:
182 days (as of 8/18/23)



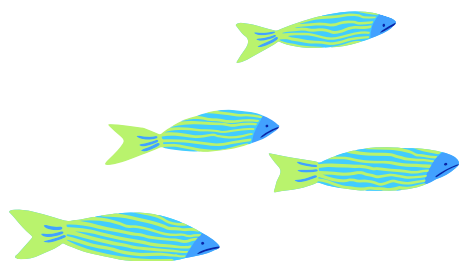
Oceanography
February 16-18, 2024

Important Dates:

Monday, September 11, 2023

Information Parent Meeting at 5:30pm
in B3 Theater (parents only)

**Applications handed out at
the end of the meeting.**



Please email if you have questions.
susan.jimison@eduprizeschools.net

Fingerprint cards

If you are available to chaperone, you might want to consider getting your fingerprint clearance card now so you are ready. Here is the [link to DPS](#) for more information.

Student essays

Students are asked to turn in an essay when they turn in their application. Things they should include in this essay are:

1. Why do they want to attend this trip?
2. Why do they feel they have "earned" this trip?
3. How they will contribute to everyone having a wonderful trip.
4. How their behavior exemplifies EDUPRIZE and how they will be a great reflection of our school.

2023-2024

L.I.F.E. FUND DUE

LIFE Funds are due September 1st, 2023 in order for students to participate in their class field trips this school year. If you have not already done so, please pay LIFE Funds through you Infinite Campus parent portal.

Lab Instructional Field Experiences (L.I.F.E.) provides special opportunities and presentations on and off campus. We aim to bring the highest quality of experiences, therefore, L.I.F.E. Fund fees are used to cover the cost. Please click on the instructions below on how to pay this fee via your parent portal.

[Click Here
for instructions
on how to make
payments via
Infinite Campus](#)

[Infinite
Campus
Portal](#)

Click on "School Store" in the menu



We are ready to get this year started!
If you are interested in helping plan or
volunteer at school events, please reach
out to your child's teacher or PTN at
ptn@eduprizeschools.net

HONORING OUTSTANDING ARIZONA TEACHERS

3

SILVER
APPLE



Nominate your teacher

for the Silver Apple Award.

NOMINATIONS ARE ACCEPTED THROUGH MARCH 15, 2024

Silver Apple
Award
Rules

There is no doubt that EDUPRIZE has some of the most outstanding teachers in the state! The 2023-2024 Silver Apple Award is a local teacher recognition program, sponsored by Channel 3 News and Arizona Bank & Trust. Eight nominated teachers are rewarded each year with a feature on 3TV and special prizes. The nominations are completed by students and signed by the principal. You can print an application [here](#).

Silver Apple
Award
Nomination
Form

In years past, we have had three Silver Apple Award winners at EDUPRIZE! If this award does not sound like the perfect recognition program, please take a look on the internet for other programs honoring educators. In addition, [greatschools.org](https://www.greatschools.org) is a great place to share your support for your child's teacher and the school!

Orchestra and Band Grades 5 and 6

It is not too late to join!

Orchestra:

Monday/Thursday - Beginner

Wednesday/Friday - Intermediate
(played previously)

7:00 - 7:40 A.M.

Questions?

jill.osborne@eduprizeschools.net

Band:

Monday - Beginning woodwinds

Wednesday Beginning brass and
percussion

Friday - All beginners

Tuesday/Thursday - All
intermediate (played previously)

7:00 - 7:40 A.M.

Questions?

michael.hall@eduprizeschools.net



[Band/Orchestra Sign-up Link](#)

Health Office Updates



IMPORTANT HEALTH OFFICE INFORMATION

As illness or health situations occur throughout the school year, it may be necessary for medication to be administered at school. All prescribed AND over the counter medication (i.e. Tylenol, Ibuprofen, Benadryl, etc.) will need to be checked into the Health Office, along with a [Prescription and Non-prescription Medication Consent](#) form which requires a doctor's signature. These forms can be found on our website www.eduprizeschools.net under the Parent & Student Resources>Health Office Forms, or you can just click on any of the links provided in light blue.

- HEALTH ACTION PLAN: Please be aware that children who have asthma, diabetes, or seizures will need an action plan provided by their health care provider, ALONG with the signed [Prescription and Non-prescription Medication Consent](#) form .
- ASTHMA: If your child has asthma, an asthma action plan will need to be provided by your doctor ALONG with a signed [Prescription and Non-prescription Medication Consent](#) form .
- ALLERGIES: Allergies that require an EpiPen will need an [Anaphylaxis Management Packet](#) filled out and signed by a doctor along with the [Prescription and Non-prescription Medication Consent](#) form .
- MEDICATION: As a reminder, ALL medications need to be checked in at the Health Office. Students should not carry medications in their backpacks. A [Prescription and Non-prescription Medication Consent](#) form will also need to be filled out for any medications, prescription or non prescription.

We cannot accept ANY medications without these forms.

Any questions can be directed to the Health Office staff at (480) 813-9537 option 7

Medication Authorization

If you would like your student to be able to access medication at school, please complete the authorization [FORM](#) and return to the health office.



Give us a Review!



Hey everyone!

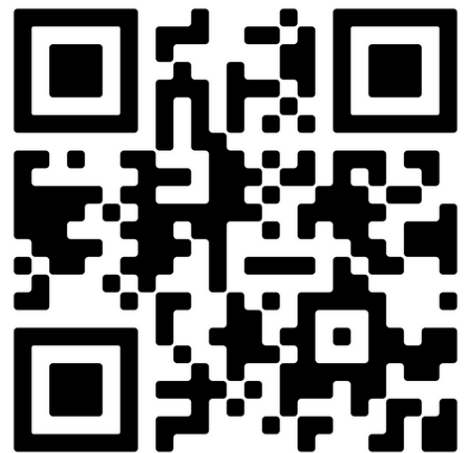
Positive reviews from awesome parents like you help other parents just like you to feel confident about choosing EDUPRIZE. Could you take 60 seconds and share your happy experiences?

We will be forever grateful. Thank you in advance for helping us out!

Use the QR Codes to write a review
for EDUPRIZE Schools on
Niche.com and Greatschools.org



Niche.com



Submit a Review

Campus Students & Campus Parents

Logging into the App

1. Download the app at the [App Store](#) or [Google Play](#).
2. Search for your District Name (Eduprize) and State. Select your district from the list.
3. Enter your Username and Password. (If you haven't create an account, please email: april.talley@eduprizeschools.net)
4. Click Log In!

Logging in from a Web Browser

1. Visit <https://eduprizeaz.infinitecampus.org/campus/portal/parents/eduprize.jsp>
2. Enter your Username and Password. (If you haven't create an account, please email: april.talley@eduprizeschools.net)
3. Click Log In!





COME AND JOIN OUR AIDE STAFF !

LOOKING FOR HARD WORKING PEOPLE WHO LOVE SAFETY AND WORKING WITH KIDS!

TIMES NEEDED ARE:

7:00-8:05 A.M.

10:20 A.M.-1:10 P.M.

2:30-3:40 P.M.

**-GREAT FOR STAY AT HOME PARENTS, RETIREES AND COLLEGE STUDENTS
OVER 21 YEARS OR OLDER.**

- WE ARE VERY FLEXIBLE WITH SCHEDULES.

- FRIENDLY ENVIRONMENT

JOB TYPE: PART-TIME 19HRS A WEEK

IF INTERESTED PLEASE CONTACT:

TYM BRITTON

AIDE SUPERVISOR

CAR LANE COORDINATOR

LUNCH PROGRAM COORDINATOR

EDUPRIZE GILBERT

PHONE: (480) 813-9537 EXT.1270

EMAIL: TYM.BRITTON@EDUPRIZESCHOOLS.NET



NOW HIRING

SUBSTITUTES

We offer:

Competitive pay - \$20.75/hour (teacher certified)
\$19.50/hour (sub certified)
\$17/hour (no certification)

Flexible Schedules - Traditional day and AM/PM TOPS

Range of Classes - Grades PreK-12th grade and specialty classes like dance, PE, computers, and much more.

Incredible Community - Our staff, students, and parents are a welcoming and loving community you will enjoy being apart of.

IF INTERESTED PLEASE EMAIL

emily.yeaman@eduprizeschools.net

Filing Instructions



Add

www.studentinsurance-kk.com to your **school's website**

Adding a link to your school's website may make it easier for parents to enroll their students in your endorsed student insurance plan. Our website, www.studentinsurance-kk.com, provides easy online enrollment. You can choose from simply adding a simple text link or something more descriptive

Suggested samples for adding www.StudentInsurance-KK.com to your school/district website:

As you select a listing from the samples below, please set up your choice with a hyperlink to <http://www.studentinsurance-kk.com>

1. Simple Text Options (with hyperlink)

example a. **Enroll in Student Insurance Here**

example b. **Quote/Buy Student Insurance Online**

2. Descriptive Text Options (with hyperlinks)

example a. **Student Accident Insurance** and the following paragraph either directly below or as a popup option. The paragraph also contains 2 hyperlink options (in bold).

*Our school/district has selected the **Student Insurance Plan** from K&K Insurance Group to make reliable coverage available to parents. If you don't have other insurance, this plan may be a resource to consider. Additionally, even if you have other coverage, this plan can help fill expensive "gaps" caused by deductible and co-pays. Coverage may be purchased at any time during the school year by visiting www.studentinsurance-kk.com.*

example b. **Student Accident Insurance** and the following paragraph either directly below or as a popup option. The paragraph also contains 1 hyperlink option (in bold).

*Our school/district has selected the **Student Insurance Plan** from K&K Insurance to make reliable coverage available to parents. Coverage may be purchased at any time during the school year by visiting www.studentinsurance-kk.com.*

If you do not have the ability to add links to your website, simply pass this sheet along to the technology team responsible for your school/district website. You may encourage individual schools to add this to their own sites as well. If you need additional assistance, please send an email to info@studentinsurance-kk.com.