

# EAGLES EDITION

Gilbert School News | PreK-6th



## Principal's Message



**Robin Yeargain**

Dear EDUPRIZE Parent,

We are in full swing of all learning and things are looking great! Teachers and students are working hard on both academic and social learning! The classroom community is blossoming, creating a caring community of learners.

Each year students are given an opportunity to extend their learning with four field experiences, two on campus and two off campus. All field experiences are aligned to our cottage themes and are incredible opportunities to make connections of what is being learned to real life. As a school, families are asked to pay a LIFE Fund each year to go toward the cost of these field experiences. The LIFE Fund charge is \$75 per student per year. The LIFE Fund does not cover all the costs of all four field experiences per year, but it does go toward payment for bus expenses and the cost of some of the admission fees.

The LIFE Fund payment is due no later than September 1, 2023. Students who do not pay the LIFE Fund by the deadline will not be able to participate in the school-sponsored field trips. Students that don't attend the trip will be given an alternative lesson for the day.

You can use your ECA Tax donation to make your LIFE Fund payment, which is wonderful, because you will get it all back, dollar for dollar, at tax time.

Please make sure your child has the LIFE Fund paid so s/he will not miss out on the wonderful trips we have planned! Some extra observations these last few weeks that are needing changes:

- There will be a short wait at carpool pickup IF everyone follows their assigned lane and time. Please only come 5 minutes before your scheduled release, it will allow for students to be picked up during the correct release and not back the lanes up.
- When driving on the main roads, please follow the law which is NO passing and driving 15 mph in the school zone.
- In the carpool lanes, please do not be on your cell phones and please drive slowly. Safety is of utmost importance!
- There is no drop off or pick up of students in the parking lot. Use the designated carpool lanes for ALL drop off and pick up. If you are unsure of your lane, please call us.
- We are needing you as Volunteers!! Please check with teachers and see how YOU can help in the classroom.

Have a wonderful weekend!

Kindly,

Robin

# QUICK REFERENCES

## Calendar Items

### AUGUST

- 11th: Sign-up Genius Goes Live**  
K-6th Conferences
- 17th: Fall Pictures**  
Traditional Day Students
- 18th: Fall Pictures**  
TOPS Students
- 18th: Sign-up Genius Goes Live**  
Kinder TOPS Conferences
- 28th - Sept. 1st: Conference Week**
- 31st: Early Release**  
Traditional Day Students

### SEPTEMBER

- 4th: No School**  
Labor Day Holiday
- 5th-8th: Conference Week**  
Kinder TOPS
- 25th-29th: Spirit Week**
- 26th: Cottage Fair**  
K-3rd Grade Traditional Day. & K-6th PM TOPS
- 27th: Cottage Fair**  
4th-6th Traditional Day & K-6th AM TOPS

## Helpful Links

[Gilbert's Parents  
Resource Page](#)



[K-6th Traditional  
Day Calendar](#)

[K-6th TOPS  
Day Calendar](#)



[K-6th Events  
Calendar](#)

[Website](#)

[Facebook](#)

[PTN  
Website](#)

[PTN  
Facebook](#)

# SEL CORNER

## (SOCIAL AND EMOTIONAL LEARNING)

Dear EDUPRIZE families,

How can we support self-control in kids, when things don't go their way? Part of growing up is learning to tolerate the discomfort of these moments and here is how grown-ups can help. Dr. Becky Kennedy, Clinical Psychologist, suggests a "two things can be true" approach, which highlights both firm boundaries and warm connection.



**Heather Vehon**  
Dean of Students K-6th

For example, you may say to your child, "It's really hard to stop watching TV — for me too. One of my parenting jobs is to make decisions I think are good for you, even when you're upset. Screen time is over. If it's hard for you to shut off the TV, I will do it for you. You're allowed to be upset."

[Check out this full article here for more great ideas.](#)



Sincerely,  
Heather Vehon  
Dean of Students  
Eduprize Schools  
Gilbert Campus  
[heather.vehon@eduprizeschools.net](mailto:heather.vehon@eduprizeschools.net)

# ATHLETIC DEPARTMENT

## Upcoming Week Sports Schedule At A Glance:

Please note dates and times for each sport's parent meeting. Important information will be given at each meeting as well as each sport's game schedule.

### **VOLLEYBALL PRACTICES THIS WEEK:**

Varsity and JV: Monday - Thursday 3:30- 5:00 PM in B4 Gym  
Junior High A- Monday & Wednesday 3:30 - 5:30 PM in B3 Gym  
Junior High B- Monday & Wednesday 3:30 - 4:45 PM in B3 Gym  
Elementary - Tuesday & Thursday 3:10 - 4:30 in B3 Gym

### **Volleyball Game Schedule**

Junior High B- Tuesday 5:30 in B4 Gym  
Junior High A- Thursday 5pm at Basis Mesa (Scrimmage)  
Varsity- Thursday 5pm at Basis Mesa (Scrimmage)

**FLAG FOOTBALL:** Parent Meeting will be held on **TUESDAY, AUGUST 15th 3:30 in B4 Foyer. Then athletes will take concussion assessment.**

### **FOOTBALL:**

PRACTICE SCHEDULE: Tuesday, Wednesday and Thursday 6am - 7:10 am

**BASEBALL:** Season has been cancelled due to not enough players interested

### **SOCCER:**

PRACTICE SCHEDULE: Monday, Tuesday and Thursday 3:30 - 5PM

**CROSS COUNTRY** is open to all students 5th-12th grade.

First practice will be held on Weds, August 16th from 6:00 AM - 7AM.

Please have all paperwork completed before tryouts. ALL FORMS need to be signed, completely filled out and dropped off **OR** emailed to Traci Smith in B4 to participate in tryouts. You can email paperwork to her at [traci.smith@eduprizeschools.net](mailto:traci.smith@eduprizeschools.net). **NO EXCEPTIONS!** You can find all forms listed here:

<https://www.eduprizeschools.net/gilbert-sports-and-extracurricular-activities/>

Make sure you bring proper attire and plenty of water for tryouts

If you have any questions please email the Athletic Director  
[Clint.ambos@eduprizeschools.net](mailto:Clint.ambos@eduprizeschools.net)



# PROJECT EXPLORATION



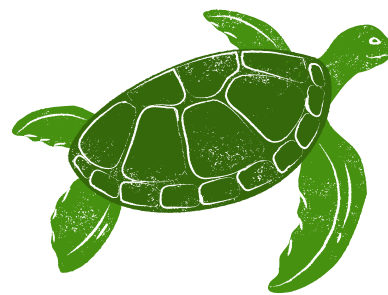
## Important Information

The plans are being established for the next EDUPRIZE Project Exploration trip! We will be attending the Oceanography trip in February! Many more details will be coming soon.

The first step is for parents to attend the informational parent meeting on Monday, September 11th at 5:30pm in the building 3 theater. If your child is considering this trip, a parent **MUST** attend this meeting. If a parent doesn't attend this parent meeting, the student will not be qualified to attend.

Last year's trip was fantastic and we are thrilled to start planning this one!

Countdown to Departure:  
189 days (as of 8/11/23)



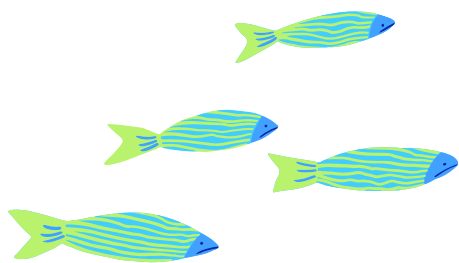
Oceanography  
February 16-18, 2024

## Important Dates:

**Monday, September 11, 2023**

Information Parent Meeting at 5:30pm  
in B3 Theater (parents only)

**Applications handed out at  
the end of the meeting.**



Please email if you have questions.  
[susan.jimison@eduprizeschools.net](mailto:susan.jimison@eduprizeschools.net)

## Fingerprint cards

If you are available to chaperone, you might want to consider getting your fingerprint clearance card now so you are ready. Here is the [link to DPS](#) for more information.

### Student essays

Students are asked to turn in an essay when they turn in their application. Things they should include in this essay are:

1. Why do they want to attend this trip?
2. Why do they feel they have "earned" this trip?
3. How they will contribute to everyone having a wonderful trip.
4. How their behavior exemplifies EDUPRIZE and how they will be a great reflection of our school.



# Join



Are you interested in playing a lead role at our school for students in PK-12th grade?

*We are looking to fill 3 PTN Board Positions for this year.*

PTN stands for Parent Teacher Network and it is a volunteer role that shares and supports the vision/goals of the school to improve education, health and safety of all children.

Our current PTN Board has been amazing and we are looking for a strong partnership to continue the great activities that bring our EDUPRIZE community together. To see more of the responsibilities of our amazing PTN click this [link](#).

We are looking for people that are interested in filling PTN Board positions for the 2023/2024 school year. In person interviews will be conducted on Friday, August 18th between 10:30 am and 12:00 pm. If you are interested, please complete this [form](#).

Kindly,  
Principals Yeargain and Murphy

# 2023-2024

# L.I.F.E. FUND DUE

LIFE Funds are due September 1st, 2023 in order for students to participate in their class field trips this school year. If you have not already done so, please pay LIFE Funds through you Infinite Campus parent portal.

Lab Instructional Field Experiences (L.I.F.E.) provides special opportunities and presentations on and off campus. We aim to bring the highest quality of experiences, therefore, L.I.F.E. Fund fees are used to cover the cost. Please click on the instructions below on how to pay this fee via your parent portal.

[Click Here  
for instructions  
on how to make  
payments via  
Infinite Campus](#)

[Infinite  
Campus  
Portal](#)

Click on "School Store" in the menu

# **battle of the books**

**Families, it's that time again!!!**

**Your 4th-6th grader might be coming home asking to participate in this year's Battle of the Books! This year, students will be given the opportunity to battle with their minds on the details of the four amazing books. Round 1 will consist of:**

**Frindle, Andrew Clements- 105 pgs  
Restart, Gordon Korman- 243 pgs  
My Side of the Mountain, J C George- 177 pgs  
The One and Only Ivan, K. Applegate- 300 pgs  
825 pages total**

**Book Battle Bags will be provided to teams while supplies last on a first come first served basis. The books are from our School's Battle of the Books library, so any damages will need to be taken care of by the team/adults. All 3 team members must have an OK from their adult to participate. Battle #1 will be Nov. 27 at 3:30.**



**Questions may be directed to  
[ashley.earnheart@eduprizeschools.net](mailto:ashley.earnheart@eduprizeschools.net)**



# HONORING OUTSTANDING ARIZONA TEACHERS

3

SILVER  
APPLE



*Nominate your teacher*

for the Silver Apple Award.

**NOMINATIONS ARE ACCEPTED THROUGH MARCH 15, 2024**

Silver Apple  
Award  
Rules

There is no doubt that EDUPRIZE has some of the most outstanding teachers in the state! The 2023-2024 Silver Apple Award is a local teacher recognition program, sponsored by Channel 3 News and Arizona Bank & Trust. Eight nominated teachers are rewarded each year with a feature on 3TV and special prizes. The nominations are completed by students and signed by the principal. You can print an application [here](#).

Silver Apple  
Award  
Nomination  
Form

In years past, we have had three Silver Apple Award winners at EDUPRIZE! If this award does not sound like the perfect recognition program, please take a look on the internet for other programs honoring educators. In addition, [greatschools.org](https://www.greatschools.org) is a great place to share your support for your child's teacher and the school!



---

EDUPRIZE SCHOOLS LLC

Dear K-3 Parents & Guardians,

At EDUPRIZE SCHOOLS, our focus is on providing the best high-quality reading instruction to all students each day. All kindergarten through third grade students are screened for reading difficulties and/or characteristics consistent with dyslexia in the fall, winter, and spring using Renaissance STAR assessments. This literacy universal screening process is a brief assessment administered to all K-3 students to inform teachers of students who are on track and students who may need more targeted intervention. This screening does *not* diagnose reading disabilities, nor dyslexia.

Per the universal screener, students who are not on benchmark are administered a deeper diagnostic assessment. This diagnostic information provides teachers and specialists with the specific skills needed to target in intervention and those interventions are started immediately, working to close the gaps. This diagnostic assessment does not diagnose reading disabilities, nor dyslexia. A change in intervention curriculum, group size, level of intensity, frequency, and/or duration may be needed. More intensive time, duration, and frequency in intervention may be needed and can take place with the classroom teacher or a specialist, such as a reading interventionist. This is considered intensive Tier 3 intervention. The progress of all students receiving intervention is closely and frequently checked. Parents are essential to this entire process. Following the Universal Literacy and Dyslexia Screener, and diagnostic assessments, you will be notified if your child is not at grade level.

Arizona's Move On When Reading (MOWR) legislation places great importance on this process beginning in kindergarten. This ensure all students remain on track to be reading at grade level by the end of 3rd grade. Arizona Revised Statute §15-701 states that if a student scores below the cut score on the reading portion of the 3rd grade statewide exam, he/she will not be promoted to 4th grade until the student makes sufficient progress in reading proficiency. It is understood that each child is unique, therefore exemptions have been established for students to be promoted to 4th grade. Those exemptions are available at [www.azed.gov/mowr](http://www.azed.gov/mowr).

A variety of factors, in and outside of school, can influence a child's educational path and progress. It is important for parents to share in the educational journey, through constant communication and involvement. We encourage you to continue to highlight and celebrate your child's strengths and share difficulties if they occur. Please reach out to us if you have any questions. We look forward to a successful school year.

Sincerely,



Robin Yeargain

580 W Melody Ave, Gilbert, AZ 85233

---

Office: 480-813-9537 | [www.eduprizeschools.net](http://www.eduprizeschools.net)

# Orchestra and Band Grades 5 and 6

**It is not too late to join!**

## Orchestra:

Monday/Thursday - Beginner

Wednesday/Friday - Intermediate  
(played previously)

7:00 - 7:40 A.M.

Questions?

[jill.osborne@eduprizeschools.net](mailto:jill.osborne@eduprizeschools.net)

## Band:

Monday - Beginning woodwinds

Wednesday Beginning brass and  
percussion

Friday - All beginners

Tuesday/Thursday - All  
intermediate (played previously)

7:00 - 7:40 A.M.

Questions?

[michael.hall@eduprizeschools.net](mailto:michael.hall@eduprizeschools.net)



[Band/Orchestra Sign-up Link](#)



# PICTURE DAY IS COMING!

¡YA LLEGA EL DÍA DE LA FOTO!

Thursday, 8/17/23 & Friday, 8/18/23

EDUPRIZE School - Gilbert



Scan to order!

¡Eche un vistazo para encargari!



## How it Works:



Pre-order today on  
[mylifetouch.com](https://mylifetouch.com)  
using your Student ID or  
Picture Day ID:  
**EVTFXWTKH**



Students are  
photographed on  
Picture Day



Orders will be sent home  
with your student after  
Picture Day

*Cómo funciona: Encarga de manera anticipada en [mylifetouch.com](https://mylifetouch.com) usando tu ID de estudiante o la ID del Día de la Foto. Los estudiantes son fotografiados el Día de la Foto. Los pedidos serán enviados a tu casa con tu estudiante después del Día de la Foto.*

Questions? Contact our Help Center at [lifetouch.com/support-us](https://lifetouch.com/support-us). Select K-12 School Photography for assistance.  
¿Preguntas? Comunícate con nuestro Centro de Ayuda en [lifetouch.com/support-us](https://lifetouch.com/support-us). Selecciona Fotografía Escolar K-12 para recibir asistencia.

# Health Office Updates



## IMPORTANT HEALTH OFFICE INFORMATION

As illness or health situations occur throughout the school year, it may be necessary for medication to be administered at school. All prescribed AND over the counter medication (i.e. Tylenol, Ibuprofen, Benadryl, etc.) will need to be checked into the Health Office, along with a [Prescription and Non-prescription Medication Consent](#) form which requires a doctor's signature. These forms can be found on our website [www.eduprizeschools.net](http://www.eduprizeschools.net) under the Parent & Student Resources>Health Office Forms, or you can just click on any of the links provided in light blue.

- HEALTH ACTION PLAN: Please be aware that children who have asthma, diabetes, or seizures will need an action plan provided by their health care provider, ALONG with the signed [Prescription and Non-prescription Medication Consent](#) form .
- ASTHMA: If your child has asthma, an asthma action plan will need to be provided by your doctor ALONG with a signed [Prescription and Non-prescription Medication Consent](#) form .
- ALLERGIES: Allergies that require an EpiPen will need an [Anaphylaxis Management Packet](#) filled out and signed by a doctor along with the [Prescription and Non-prescription Medication Consent](#) form .
- MEDICATION: As a reminder, ALL medications need to be checked in at the Health Office. Students should not carry medications in their backpacks. A [Prescription and Non-prescription Medication Consent](#) form will also need to be filled out for any medications, prescription or non prescription.

We cannot accept ANY medications without these forms.

Any questions can be directed to the Health Office staff at (480) 813-9537 option 7

## Medication Authorization

If you would like your student to be able to access medication at school, please complete the authorization [FORM](#) and return to the health office.





# Give us a Review!



Hey everyone!

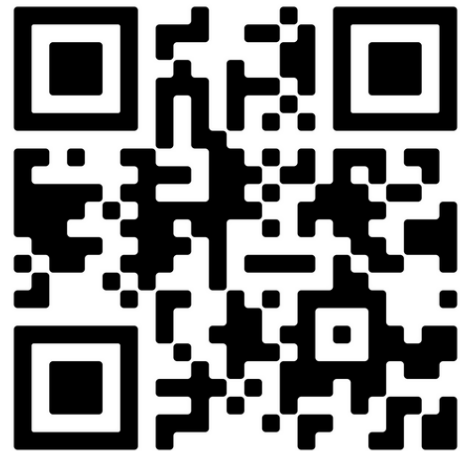
Positive reviews from awesome parents like you help other parents just like you to feel confident about choosing EDUPRIZE. Could you take 60 seconds and share your happy experiences?

We will be forever grateful. Thank you in advance for helping us out!

Use the QR Codes to write a review  
for EDUPRIZE Schools on  
Niche.com and Greatschools.org



Niche.com



Submit a Review

# Campus Students & Campus Parents

## Logging into the App

1. Download the app at the [App Store](#) or [Google Play](#).
2. Search for your District Name (Eduprize) and State. Select your district from the list.
3. Enter your Username and Password. (If you haven't create an account, please email: [april.talley@eduprizeschools.net](mailto:april.talley@eduprizeschools.net))
4. Click Log In!

## Logging in from a Web Browser

1. Visit <https://eduprizeaz.infinitecampus.org/campus/portal/parents/eduprize.jsp>
2. Enter your Username and Password. (If you haven't create an account, please email: [april.talley@eduprizeschools.net](mailto:april.talley@eduprizeschools.net))
3. Click Log In!





**COME AND JOIN OUR AIDE STAFF !**

**LOOKING FOR HARD WORKING PEOPLE WHO LOVE SAFETY AND WORKING WITH KIDS!**

---

**TIMES NEEDED ARE:**

**7:00-8:05 A.M.**

**10:20 A.M.-1:10 P.M.**

**2:30-3:40 P.M.**

**-GREAT FOR STAY AT HOME PARENTS, RETIREES AND COLLEGE STUDENTS  
OVER 21 YEARS OR OLDER.**

**- WE ARE VERY FLEXIBLE WITH SCHEDULES.**

**- FRIENDLY ENVIRONMENT**

**JOB TYPE: PART-TIME 19HRS A WEEK**

---

**IF INTERESTED PLEASE CONTACT:**

**TYM BRITTON**

**AIDE SUPERVISOR**

**CAR LANE COORDINATOR**

**LUNCH PROGRAM COORDINATOR**

**EDUPRIZE GILBERT**

**PHONE: (480) 813-9537 EXT.1270**

**EMAIL: TYM.BRITTON@EDUPRIZESCHOOLS.NET**



**NOW HIRING**

# **SUBSTITUTES**

## **We offer:**

**Competitive pay** - \$20.75/hour (teacher certified)  
\$19.50/hour (sub certified)  
\$17/hour (no certification)

**Flexible Schedules** - Traditional day and AM/PM TOPS

**Range of Classes** - Grades PreK-12th grade and specialty classes like dance, PE, computers, and much more.

**Incredible Community** - Our staff, students, and parents are a welcoming and loving community you will enjoy being apart of.

***IF INTERESTED PLEASE EMAIL***

[emily.yeaman@eduprizeschools.net](mailto:emily.yeaman@eduprizeschools.net)



### Website

Our webpage contains important information such as parent notices, dates of our Board meetings and budgets, and important ECA programs and tax credit information.

### Resumés

Resumé information for all instructional staff is available in the administration office.

### Free and Reduced Lunch/Every Student Succeeds Act

EDUPRIZE does not participate in the official National School Lunch Program. A reduction of 10% is offered to parents who meet the Federal Income Guidelines at the Gilbert campus. Applications are available at the Front Desk of all buildings.

### Board of Directors Meeting

Board of Directors meetings are generally held every month and the date, location and times are posted on our website. Meeting agenda is posted on the business bulletin board on site and on line on the school website.

<https://www.eduprizeschools.net/board-2/>

### Equal Employment/Enrollment Opportunities

EDUPRIZE provides equal opportunity to all employees and enrolled students and is not biased regarding race, gender, ethnicity, religion, national origin, language proficiency or disability.

### Open Enrollment

EDUPRIZE ensures that it complies with all open enrollment requirements per state law. EDUPRIZE uses a lottery system for filling openings and no tuition is required.

### Political Activities

EDUPRIZE ensures that it does not use its forum or student base to promote any political activities or position

### EL Information

Arizona is a very diverse state with many different cultures and languages. EDUPRIZE is no different, we have about 100 students that have a language other than English within the home. The languages represented include Spanish, German, Russian, Serbian, French, Arabic, Urdu, Korean and Cantonese, to name a few.

Any student that has another language, either spoken at home or by the student, must take a proficiency exam in English. Students who do not test proficient in English are called ELs, or English Learners. These students qualify for extra help during the day to improve English fluency. EDUPRIZE uses 2 different models of instruction, both include SEI (Structured English Immersion) endorsed teachers using English Language Proficiency (ELP) standards. In K-6th grade, we have a 2 hour SEI model, where students remain in their classroom and the teacher uses SEI strategies to increase English language proficiency. This model will focus on Reading, Writing, Listening, Speaking and Grammar standards that are incorporated within the classroom instruction and small group lessons. In the 7-12th grades, students are in a pull-out program with an SEI endorsed teacher that provides 50 minutes of focused English instruction to EL students. Both programs use ELD (English Language Development) as well as ELP standards that tie the English language objectives to content instruction. Students are monitored in their English fluency progression each quarter and then are reassessed in Quarter 3 through a state test called the AZELLA-Arizona English Language Learner Assessment. As always, EDUPRIZE teachers do a remarkable job on helping our ELs increase their English proficiency each year.

