

EAGLES EDITION



Principal's Message

Hello Eagle Families:

As teachers prepare for student conferences next week, please make sure you sign up by Wednesday, August 20, 2023 at 12:00 PM. If you have not signed up to meet with your student(s) teachers please take advantage of this opportunity to not only engage in your student(s) learning, but also support the communication from school to home. Meeting with your students(s) teachers can also provide you with insightful information. Please use the link below to find the SignUpGenius links for your student(s) teachers.

- [Conference Sign-up](#)

Our Arizona Academic Standards Assessment (AASA) scores have arrived. Advisory teachers will be sending the scores home with your student(s) next week. Please be sure to ask your student(s) for them.

Now that all of our students have received their student physical ID cards, the expectation is to show the IDs upon entering campus. If your student has lost their ID, the cost to replace it is \$5.00. Students who do not have their physical ID card on them will be sent to the office where a new one can be printed.

As the heat continues through the coming weeks, please review the student handbook for dress code standards. Dress Code standards can be found on page 16 of the student handbook.

Although Crocs and other foam shoes are popular items for students, students will not be permitted to participate in any activity involving running. Please encourage your student(s) to bring sneakers if they would like to participate in any of the activities that involving running.

- [Secondary Gilbert Campus Student Handbook](#)

Finally, the LIFE FUND fee is due Friday, September 1, 2023. The fee is \$75 per student. The fee helps cover the cost of field trips. The fee is also considered a tax credit.

Have a great weekend Eagles!

Warm Regards,

Dr. Jennifer Murphy

QUICK REFERENCES

Calendar Items

AUGUST

28th - Sept. 1st: Conference Week

31st: Early Release

Traditional Day Students

SEPTEMBER

4th: No School

Labor Day Holiday

Helpful Links

[Gilbert's Parents
Resource Page](#)



[7th-12th
School Calendar](#)

[7th-12th
Events Calendar](#)



[Friday A/B
Schedule](#)

[7th-8th Bell
Schedule](#)

[9th-12th
Bell Schedule](#)

[Website](#)

[Facebook](#)

[PTN
Website](#)

[PTN
Facebook](#)

ATHLETIC DEPARTMENT

Upcoming Week Sports Schedule At A Glance:

Please check AZCAAPREPS.COM for up to the date game schedule and location.

ALL Athletic fees need to be paid by the first game.

Unpaid fees can lead to NOT playing in games.

****Sports photos will be on Friday Sept. 15 starting at 12:15****

VOLLEYBALL PRACTICES THIS WEEK:

Varsity: Wednesday & Thursday 3:30-5:30 in B4 Gym

JV: Tuesday Wednesday & Thursday 3:30- 5:00 PM in B4 Gym

Junior High A- Wednesday 3:45- 5:45 in B3 Gym

Junior High B- Monday 3:15- 4:45 in B3 Gym

Elementary - Thursday 3:10 - 4:30 in B3 Gym

VOLLEYBALL GAME SCHEDULE:

Elementary- Tuesday (29) 5:30 @ Val Vista Academy

Friday (9/1) 4PM @ Leading Edge Academy Maricopa

Junior High A- Monday (28) 4:30 @ EVAC (Legacy Sports park Court 26)

Friday (9/1) 4:30 Vs ALA Gilbert

Junior High B- Wednesday (30) 4:30 @ Heritage Academy Mesa2 (Family Life Center Gym)

Friday (9/1) 5:30 Vs ALA Gilbert 2

JV- NO GAMES THIS WEEK

Varsity- Monday(28) 4:30 Vs SW Leadership Academy in B4 Gym

Tuesday (29) 4:30 @ Heritage Academy Mesa(Family Life Center Gym)

FOOTBALL PRACTICE SCHEDULE:

Tuesday, Wednesday and Thursday 6am - 7:10 am

FLAG FOOTBALL Games:

Thursday (31) 5:30pm & 6:30pm @ Freestone Park vs EVAC

SOCCER PRACTICE SCHEDULE:

Monday & Thursday 3:30 - 5PM

SOCCER GAME SCHEDULE:

TUESDAY(29)~ 4:30 Vs EVAC

CROSS COUNTRY is open to ALL students 5th-12th grade (We are still accepting runners!).

Practice ~ Monday and Wednesday 6am - 7am

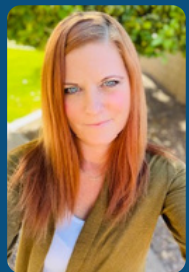
You can find all forms listed here:

<https://www.eduprizeschools.net/gilbert-sports-and-extracurricular-activities>

Make sure you wear proper attire and bring plenty of water.

If you have any questions please email the Athletic Director

Clint.ambos@eduprizeschools.net



Amy Smith
IB Director

INTERNAL ASSESSMENT CALENDAR AND THE MAY 2024 EXAMINATION SCHEDULE

The 2023-2024 Internal assessment calendar is official. If your student is testing this year, please be mindful of these dates. You can find both documents on the MyIB Google Classroom. If you aren't logged into this classroom, the code isnigb777.

IB MISSION STATEMENT

The International Baccalaureate Program aims to develop inquiring, knowledgeable, and caring young people who help to create a better and more peaceful world through intercultural understanding and respect. The organization works with schools, governments and international organizations to develop challenging programs of international education and rigorous assessment. Our program focuses on the development of the whole child as an inquirer and is defined by six transdisciplinary themes of global significance.

REGISTRATION

Registration for all IB exams will be in September, so be sure to ask exam-related questions before then. I'll be talking with the IB students to make sure they are on track with their goals, so if you aren't sure if you want to test or in what subject, please email me. Each exam is 119 and you will pay through Infinite Campus—more to come on that.

Amy Smith
amy.smith@eduprizeschools.net

Student Immunizations

Your child may be due for immunizations.

Kendy is currently reaching out to parents whose students are currently not in compliance. Please check your emails, even your spam folder so you don't miss important information.

Please look over the immunization policy in our school [handbook](#) for more information or click this [link](#) to see Arizona Guide to Immunizations. If you have further questions please reach out to Kendy.Gonzalez@eduprizeschools.net



Stay Healthy and Safe



In order to provide a healthy and safe environment for the children and staff of our Education Program, we ask for your cooperation in adhering to our school's Health Regulations which are listed below. In the case of illness or injury in school, emergency first aid will be given and the school nurse will contact as necessary, the home, work, or emergency phone numbers which you have provided in Infinite Campus.

1. Please remember to contact the Health Office with any changes in your child's medical conditions.

2. Please remember that we do have children in our program that may have a compromised immune system, which makes them more susceptible to illnesses.

In order to prevent the spread of communicable disease and to ensure a rapid recovery, please keep your child home at least 24 hours if he/she shows any of the these symptoms: fever (>100.0), red or discharging eyes, cough, earache, diarrhea, vomiting, sore throat, or skin rash

3. Children who arrive at school or develop the above mentioned symptoms will be sent home. Parents will be contacted to pick up their child or send an emergency contact person.

4. If your child has been seen in an Emergency Room, Urgent Care/Clinic, for any stitches, broken or sprained extremities, or head injury, please have a note from the provider releasing the child to school with any limitations noted.

5. Please remember to send your child to school with proper footwear. You can reference our [handbook](#) for school dress code.

If you have any questions or concerns regarding our policy, please feel free to contact our Health Office

Thank you for your cooperation in keeping all of our students safe and healthy.

Eduprize Nursing Staff
(480) 813-9537
nurse@eduprizeschools.net

2023-2024

L.I.F.E. FUND DUE

LIFE Funds are due September 1st, 2023 in order for students to participate in their class field trips this school year. If you have not already done so, please pay LIFE Funds through you Infinite Campus parent portal.

Lab Instructional Field Experiences (L.I.F.E.) provides special opportunities and presentations on and off campus. We aim to bring the highest quality of experiences, therefore, L.I.F.E. Fund fees are used to cover the cost. Please click on the instructions below on how to pay this fee via your parent portal.

[Click Here
for instructions
on how to make
payments via
Infinite Campus](#)

[Infinite
Campus
Portal](#)

Click on "School Store" in the menu



We are ready to get this year started!
If you are interested in helping plan or
volunteer at school events, please reach
out to your child's teacher or PTN at
ptn@eduprizeschools.net

HONORING OUTSTANDING ARIZONA TEACHERS

3

SILVER
APPLE



Nominate your teacher

for the Silver Apple Award.

NOMINATIONS ARE ACCEPTED THROUGH MARCH 15, 2024

Silver Apple
Award
Rules

There is no doubt that EDUPRIZE has some of the most outstanding teachers in the state! The 2023-2024 Silver Apple Award is a local teacher recognition program, sponsored by Channel 3 News and Arizona Bank & Trust. Eight nominated teachers are rewarded each year with a feature on 3TV and special prizes. The nominations are completed by students and signed by the principal. You can print an application [here](#).

Silver Apple
Award
Nomination
Form

In years past, we have had three Silver Apple Award winners at EDUPRIZE! If this award does not sound like the perfect recognition program, please take a look on the internet for other programs honoring educators. In addition, [greatschools.org](https://www.greatschools.org) is a great place to share your support for your child's teacher and the school!

Orchestra and Band Grades 5 and 6

It is not too late to join!

Orchestra:

Monday/Thursday - Beginner

Wednesday/Friday - Intermediate
(played previously)

7:00 - 7:40 A.M.

Questions?

jill.osborne@eduprizeschools.net

Band:

Monday - Beginning woodwinds

Wednesday Beginning brass and
percussion

Friday - All beginners

Tuesday/Thursday - All
intermediate (played previously)

7:00 - 7:40 A.M.

Questions?

michael.hall@eduprizeschools.net



[Band/Orchestra Sign-up Link](#)

Health Office Updates



IMPORTANT HEALTH OFFICE INFORMATION

As illness or health situations occur throughout the school year, it may be necessary for medication to be administered at school. All prescribed AND over the counter medication (i.e. Tylenol, Ibuprofen, Benadryl, etc.) will need to be checked into the Health Office, along with a [Prescription and Non-prescription Medication Consent](#) form which requires a doctor's signature. These forms can be found on our website www.eduprizeschools.net under the Parent & Student Resources>Health Office Forms, or you can just click on any of the links provided in light blue.

- HEALTH ACTION PLAN: Please be aware that children who have asthma, diabetes, or seizures will need an action plan provided by their health care provider, ALONG with the signed [Prescription and Non-prescription Medication Consent](#) form .
- ASTHMA: If your child has asthma, an asthma action plan will need to be provided by your doctor ALONG with a signed [Prescription and Non-prescription Medication Consent](#) form .
- ALLERGIES: Allergies that require an EpiPen will need an [Anaphylaxis Management Packet](#) filled out and signed by a doctor along with the [Prescription and Non-prescription Medication Consent](#) form .
- MEDICATION: As a reminder, ALL medications need to be checked in at the Health Office. Students should not carry medications in their backpacks. A [Prescription and Non-prescription Medication Consent](#) form will also need to be filled out for any medications, prescription or non prescription.

We cannot accept ANY medications without these forms.

Any questions can be directed to the Health Office staff at (480) 813-9537 option 7

Medication Authorization

If you would like your student to be able to access medication at school, please complete the authorization [FORM](#) and return to the health office.



Give us a Review!



Hey everyone!

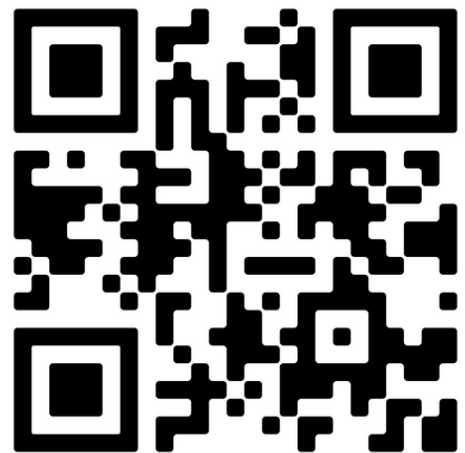
Positive reviews from awesome parents like you help other parents just like you to feel confident about choosing EDUPRIZE. Could you take 60 seconds and share your happy experiences?

We will be forever grateful. Thank you in advance for helping us out!

Use the QR Codes to write a review
for EDUPRIZE Schools on
Niche.com and Greatschools.org



Niche.com



Submit a Review

Campus Students & Campus Parents

Logging into the App

1. Download the app at the [App Store](#) or [Google Play](#).
2. Search for your District Name (Eduprize) and State. Select your district from the list.
3. Enter your Username and Password. (If you haven't create an account, please email: april.talley@eduprizeschools.net)
4. Click Log In!

Logging in from a Web Browser

1. Visit <https://eduprizeaz.infinitecampus.org/campus/portal/parents/eduprize.jsp>
2. Enter your Username and Password. (If you haven't create an account, please email: april.talley@eduprizeschools.net)
3. Click Log In!





COME AND JOIN OUR AIDE STAFF !

LOOKING FOR HARD WORKING PEOPLE WHO LOVE SAFETY AND WORKING WITH KIDS!

TIMES NEEDED ARE:

7:00-8:05 A.M.

10:20 A.M.-1:10 P.M.

2:30-3:40 P.M.

**-GREAT FOR STAY AT HOME PARENTS, RETIREES AND COLLEGE STUDENTS
OVER 21 YEARS OR OLDER.**

- WE ARE VERY FLEXIBLE WITH SCHEDULES.

- FRIENDLY ENVIRONMENT

JOB TYPE: PART-TIME 19HRS A WEEK

IF INTERESTED PLEASE CONTACT:

TYM BRITTON

AIDE SUPERVISOR

CAR LANE COORDINATOR

LUNCH PROGRAM COORDINATOR

EDUPRIZE GILBERT

PHONE: (480) 813-9537 EXT.1270

EMAIL: TYM.BRITTON@EDUPRIZESCHOOLS.NET



NOW HIRING

SUBSTITUTES

We offer:

Competitive pay - \$20.75/hour (teacher certified)
\$19.50/hour (sub certified)
\$17/hour (no certification)

Flexible Schedules - Traditional day and AM/PM TOPS

Range of Classes - Grades PreK-12th grade and
specialty classes like dance, PE,
computers, and much more.

Incredible Community - Our staff, students, and
parents are a welcoming and
loving community you will
enjoy being apart of.

IF INTERESTED PLEASE EMAIL

emily.yeaman@eduprizeschools.net