

EAGLES EDITION



Principal's Message

Hello Eagle Families,

As we wrap up our fourth week of school we are beginning to settle into the school year. We are almost ready for student conferences. We encourage all of our families to participate in their child(ren)'s academic learning, which provides more transparency from school to home. Student conferences are from August 30, 2023 - September 1, 2023. The link below provides links to each of our teacher's SignUpGenius. Please note the sign up window closes on Wednesday, August 30, 2023 12:00 PM. If you miss the sign up window please contact your student's teacher individually.

- [Student Conference Sign-up](#)

Each year our families are asked to pay \$75 toward the LIFE FUND (for each student). The money goes towards the cost of field trips. Although the LIFE FUND does not cover the entire cost, it does support the cost of transporting students to and from school. The LIFE FUND payment is due September 1, 2023. The LIFE FUND cost is also considered an ECA Tax donation.

We need your help with the carpool pickup. By following the assigned pickup time and using the assigned lanes, wait times after school will be minimized. Please arrive no more than 3 minutes prior to the assigned pick up time. Arriving early makes it very difficult for students with earlier dismissal times to depart campus, and causes the lanes to back up. Please note that your pick up time is assigned by the oldest sibling's dismissal time. If you have a student in elementary school, their teacher will not release them until the oldest sibling's dismissal time. This process prevents parents/guardians from having to loop multiple times around the carpool. Finally, since student safety is paramount, please adhere to the speed limits on the surrounding roads and on campus.

Have a great weekend Eagles!

Warm Regards,

Dr. Jennifer Murphy

QUICK REFERENCES

Calendar Items

AUGUST

28th - Sept. 1st: Conference Week

31st: Early Release

Traditional Day Students

Spirit Week AUGUST 21-25

EDUPRIZE

SHOW YOUR SCHOOL SPIRIT!

Aug. 21 MON	Adam Sandler Day	Costplay Adam Sandler by dressing up in basketball shorts, preferably blue ones, some baggy or striped polo shirts, and basketball shoes
Aug. 22 TUE	Decades Day	Wear your favorite styles from the 20s 40s 50s 60s 70s 80s 90s and 2000s
Aug. 23 WED	Twin/Duo Day	Match clothes and twin with your friends
Aug. 24 THU	PJ Day	Wear your favorite pjs to school (no slippers)
Aug. 25 FRI	Grade colors Day	Please wear the color your grade is assigned

WEEK OF EXCITEMENT!

SEPTEMBER

4th: No School

Labor Day Holiday

Helpful Links

[Gilbert's Parents Resource Page](#)



[7th-12th School Calendar](#)

[7th-12th Events Calendar](#)



[Friday A/B Schedule](#)

[7th-8th Bell Schedule](#)

[9th-12th Bell Schedule](#)

[Website](#)

[Facebook](#)

[PTN Website](#)

[PTN Facebook](#)

ATHLETIC DEPARTMENT

Upcoming Week Sports Schedule At A Glance:

Please check AZCAAPREPS.COM for up to the date game schedule and location.

**ALL Athletic fees need to be paid by the first game.
Unpaid fees can lead to NOT playing in games.**

****Sports photos will be on Friday Sept. 15 starting at 12:15****

VOLLEYBALL PRACTICES THIS WEEK:

Varsity and JV: Monday & Thursday 3:30- 5:00 PM in B4 Gym
Junior High A- Wednesday 3:45- 5:45 in B3 Gym
Junior High B- Wednesday 3:15- 4:45 in B3 Gym
Elementary - Tuesday & Thursday 3:10 - 4:30 in B3 Gym

VOLLEYBALL GAME SCHEDULE:

Elementary- Monday (21) 4:30 vs Leading Edge in B3 Gym
Wednesday(23) 4:30 @ Heritage Academy Gateway
Friday (25) 4pm vs Leading Edge Academy in B4 Gym
Junior High A- Tuesday (22) 4:30 vs Legacy Traditional in B4 Gym
Junior High B- Tuesday (22) 5:30 vs Heritage Academy in B4 Gym
Thursday(24) 5pm @ ALA Ironwood
JV- Tuesday (22) @ 5pm @ Roosevelt Prep Academy (Early release from B4 @ 2:50)
Varsity- Tuesday(22) 6pm @ LFPA
Wednesday(23) @ 4:30 in B4 Gym

FOOTBALL PRACTICE SCHEDULE: Tuesday, Wednesday and Thursday 6am - 7:10 am

FLAG FOOTBALL Games:

Thursday (24) 5:30pm & 6:30pm @ Freestone Park vs Academy with Community Partners
Friday (25) 4 pm & 5 pm @ Flagstaff Christian School (Early Release at 11:30)

SOCCER PRACTICE SCHEDULE: Monday, Wednesday and Thursday at 3:30 - 5PM

SOCCER GAME SCHEDULE:

TUESDAY~ 4:30 Vs Heritage Gateway @ Heritage Gateway Academy
Friday~ 5:30pm @ Tri City Christian

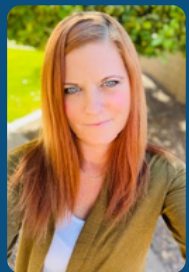
CROSS COUNTRY is open to ALL students 5th-12th grade (We are still accepting runners!).
Practice ~ Monday and Wednesday 6am - 7am

You can find all forms listed here:

<https://www.eduprizeschools.net/gilbert-sports-and-extracurricular-activities>

Make sure you wear proper attire and bring plenty of water.

If you have any questions please email the Athletic Director
Clint.ambos@eduprizeschools.net



Amy Smith
IB Director

INTERNAL ASSESSMENT CALENDAR AND THE MAY 2024 EXAMINATION SCHEDULE

The 2023-2024 Internal assessment calendar is official. If your student is testing this year, please be mindful of these dates. You can find both documents on the MyIB Google Classroom. If you aren't logged into this classroom, the code isnigb777.

IB MISSION STATEMENT

The International Baccalaureate Program aims to develop inquiring, knowledgeable, and caring young people who help to create a better and more peaceful world through intercultural understanding and respect. The organization works with schools, governments and international organizations to develop challenging programs of international education and rigorous assessment. Our program focuses on the development of the whole child as an inquirer and is defined by six transdisciplinary themes of global significance.

REGISTRATION

Registration for all IB exams will be in September, so be sure to ask exam-related questions before then. I'll be talking with the IB students to make sure they are on track with their goals, so if you aren't sure if you want to test or in what subject, please email me. Each exam is 119 and you will pay through Infinite Campus—more to come on that.

Amy Smith
amy.smith@eduprizeschools.net

EDUPRIZE ELECTIVES



Get to know our amazing
JH/HS elective teachers.

Click this [link](#) to read
more about our each
elective teacher.



2023-2024

L.I.F.E. FUND DUE

LIFE Funds are due September 1st, 2023 in order for students to participate in their class field trips this school year. If you have not already done so, please pay LIFE Funds through you Infinite Campus parent portal.

Lab Instructional Field Experiences (L.I.F.E.) provides special opportunities and presentations on and off campus. We aim to bring the highest quality of experiences, therefore, L.I.F.E. Fund fees are used to cover the cost. Please click on the instructions below on how to pay this fee via your parent portal.

[Click Here
for instructions
on how to make
payments via
Infinite Campus](#)

[Infinite
Campus
Portal](#)

Click on "School Store" in the menu



We are ready to get this year started!
If you are interested in helping plan or
volunteer at school events, please reach
out to your child's teacher or PTN at
ptn@eduprizeschools.net

HONORING OUTSTANDING ARIZONA TEACHERS

3

SILVER
APPLE



Nominate your teacher

for the Silver Apple Award.

NOMINATIONS ARE ACCEPTED THROUGH MARCH 15, 2024

Silver Apple
Award
Rules

There is no doubt that EDUPRIZE has some of the most outstanding teachers in the state! The 2023-2024 Silver Apple Award is a local teacher recognition program, sponsored by Channel 3 News and Arizona Bank & Trust. Eight nominated teachers are rewarded each year with a feature on 3TV and special prizes. The nominations are completed by students and signed by the principal. You can print an application [here](#).

Silver Apple
Award
Nomination
Form

In years past, we have had three Silver Apple Award winners at EDUPRIZE! If this award does not sound like the perfect recognition program, please take a look on the internet for other programs honoring educators. In addition, [greatschools.org](https://www.greatschools.org) is a great place to share your support for your child's teacher and the school!

Orchestra and Band Grades 5 and 6

It is not too late to join!

Orchestra:

Monday/Thursday - Beginner

Wednesday/Friday - Intermediate
(played previously)

7:00 - 7:40 A.M.

Questions?

jill.osborne@eduprizeschools.net

Band:

Monday - Beginning woodwinds

Wednesday Beginning brass and
percussion

Friday - All beginners

Tuesday/Thursday - All
intermediate (played previously)

7:00 - 7:40 A.M.

Questions?

michael.hall@eduprizeschools.net



[Band/Orchestra Sign-up Link](#)

Health Office Updates



IMPORTANT HEALTH OFFICE INFORMATION

As illness or health situations occur throughout the school year, it may be necessary for medication to be administered at school. All prescribed AND over the counter medication (i.e. Tylenol, Ibuprofen, Benadryl, etc.) will need to be checked into the Health Office, along with a [Prescription and Non-prescription Medication Consent](#) form which requires a doctor's signature. These forms can be found on our website www.eduprizeschools.net under the Parent & Student Resources>Health Office Forms, or you can just click on any of the links provided in light blue.

- **HEALTH ACTION PLAN:** Please be aware that children who have asthma, diabetes, or seizures will need an action plan provided by their health care provider, ALONG with the signed [Prescription and Non-prescription Medication Consent](#) form .
- **ASTHMA:** If your child has asthma, an asthma action plan will need to be provided by your doctor ALONG with a signed [Prescription and Non-prescription Medication Consent](#) form .
- **ALLERGIES:** Allergies that require an EpiPen will need an [Anaphylaxis Management Packet](#) filled out and signed by a doctor along with the [Prescription and Non-prescription Medication Consent](#) form .
- **MEDICATION:** As a reminder, ALL medications need to be checked in at the Health Office. Students should not carry medications in their backpacks. A [Prescription and Non-prescription Medication Consent](#) form will also need to be filled out for any medications, prescription or non prescription.

We cannot accept ANY medications without these forms.

Any questions can be directed to the Health Office staff at (480) 813-9537 option 7

Medication Authorization

If you would like your student to be able to access medication at school, please complete the authorization [FORM](#) and return to the health office.



Give us a Review!



Hey everyone!

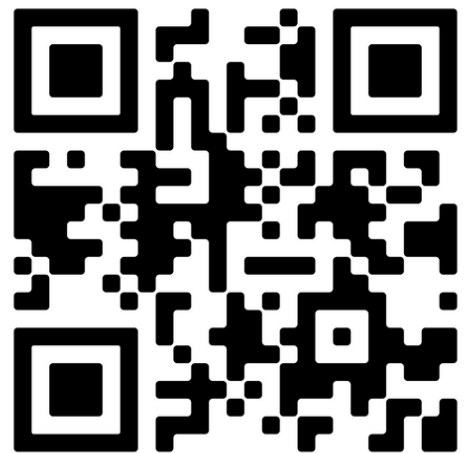
Positive reviews from awesome parents like you help other parents just like you to feel confident about choosing EDUPRIZE. Could you take 60 seconds and share your happy experiences?

We will be forever grateful. Thank you in advance for helping us out!

Use the QR Codes to write a review
for EDUPRIZE Schools on
Niche.com and Greatschools.org



Niche.com



Submit a Review

Campus Students & Campus Parents

Logging into the App

1. Download the app at the [App Store](#) or [Google Play](#).
2. Search for your District Name (Eduprize) and State. Select your district from the list.
3. Enter your Username and Password. (If you haven't create an account, please email: april.talley@eduprizeschools.net)
4. Click Log In!

Logging in from a Web Browser

1. Visit <https://eduprizeaz.infinitecampus.org/campus/portal/parents/eduprize.jsp>
2. Enter your Username and Password. (If you haven't create an account, please email: april.talley@eduprizeschools.net)
3. Click Log In!





COME AND JOIN OUR AIDE STAFF !

LOOKING FOR HARD WORKING PEOPLE WHO LOVE SAFETY AND WORKING WITH KIDS!

TIMES NEEDED ARE:

7:00-8:05 A.M.

10:20 A.M.-1:10 P.M.

2:30-3:40 P.M.

**-GREAT FOR STAY AT HOME PARENTS, RETIREES AND COLLEGE STUDENTS
OVER 21 YEARS OR OLDER.**

- WE ARE VERY FLEXIBLE WITH SCHEDULES.

- FRIENDLY ENVIRONMENT

JOB TYPE: PART-TIME 19HRS A WEEK

IF INTERESTED PLEASE CONTACT:

TYM BRITTON

AIDE SUPERVISOR

CAR LANE COORDINATOR

LUNCH PROGRAM COORDINATOR

EDUPRIZE GILBERT

PHONE: (480) 813-9537 EXT.1270

EMAIL: TYM.BRITTON@EDUPRIZESCHOOLS.NET



NOW HIRING

SUBSTITUTES

We offer:

Competitive pay - \$20.75/hour (teacher certified)
\$19.50/hour (sub certified)
\$17/hour (no certification)

Flexible Schedules - Traditional day and AM/PM TOPS

Range of Classes - Grades PreK-12th grade and specialty classes like dance, PE, computers, and much more.

Incredible Community - Our staff, students, and parents are a welcoming and loving community you will enjoy being apart of.

IF INTERESTED PLEASE EMAIL

emily.yeaman@eduprizeschools.net

Filing Instructions



Add

www.studentinsurance-kk.com to your **school's website**

Adding a link to your school's website may make it easier for parents to enroll their students in your endorsed student insurance plan. Our website, www.studentinsurance-kk.com, provides easy online enrollment. You can choose from simply adding a simple text link or something more descriptive

Suggested samples for adding www.StudentInsurance-KK.com to your school/district website:

As you select a listing from the samples below, please set up your choice with a hyperlink to <http://www.studentinsurance-kk.com>

1. Simple Text Options (with hyperlink)

example a. **Enroll in Student Insurance Here**

example b. **Quote/Buy Student Insurance Online**

2. Descriptive Text Options (with hyperlinks)

example a. **Student Accident Insurance** and the following paragraph either directly below or as a popup option. The paragraph also contains 2 hyperlink options (in bold).

*Our school/district has selected the **Student Insurance Plan** from K&K Insurance Group to make reliable coverage available to parents. If you don't have other insurance, this plan may be a resource to consider. Additionally, even if you have other coverage, this plan can help fill expensive "gaps" caused by deductible and co-pays. Coverage may be purchased at any time during the school year by visiting www.studentinsurance-kk.com.*

example b. **Student Accident Insurance** and the following paragraph either directly below or as a popup option. The paragraph also contains 1 hyperlink option (in bold).

*Our school/district has selected the **Student Insurance Plan** from K&K Insurance to make reliable coverage available to parents. Coverage may be purchased at any time during the school year by visiting www.studentinsurance-kk.com.*

If you do not have the ability to add links to your website, simply pass this sheet along to the technology team responsible for your school/district website. You may encourage individual schools to add this to their own sites as well. If you need additional assistance, please send an email to info@studentinsurance-kk.com.