

EAGLES EDITION



Principal's Message

Hello Eagle Families,

Our secondary classes are off and running. Teachers are teaching and students are learning! Student schedules are set and we are now only making changes based on credit deficiencies toward high school graduation. EDUPRIZE PTN is currently looking to fill three positions on the board. Please see the PTN flier attached to this newsletter. Parent teacher conferences are quickly approaching and will begin the week of August 28, 2023. A "Signup Genius" link will be sent out next week.

Have a great weekend Eagles.

Warm Regards,
Dr. Jennifer Murphy



QUICK REFERENCES

Calendar Items

AUGUST

28th - Sept. 1st: Conference Week

31st: Early Release
Traditional Day Students

SEPTEMBER

4th: No School
Labor Day Holiday

Helpful Links

[Gilbert's Parents
Resource Page](#)



[7th-12th
School Calendar](#)

[7th-12th
Events Calendar](#)



[Friday A/B
Schedule](#)

[7th-8th Bell
Schedule](#)

[9th-12th
Bell Schedule](#)

[Website](#)

[Facebook](#)

[PTN
Website](#)

[PTN
Facebook](#)



EDUPRIZE UPDATES

Art Donations

Our High School Art class is looking for donations to help them get materials for a unit in "Understanding Anatomy". It is model hands, feet, eyes, ears and heads! Please help students have this opportunity by giving a donation...just click on the link!

<https://www.donorschoose.org/project/understanding-anatomy/7581083/#>

Student Immunizations

Don't forget to check if your child has missed or has an upcoming immunization. Start off the year being ready and keep your records up to date. If you are unsure if your child needs shots, please contact Kendy.Gonzalez@eduprizeschools.net. You can also refer to the school handbook to know more about our policy and state compliance laws.

The school needs updated immunization records for ALL students, this keeps us in compliance with the state. Please send updated records to Kendy.Gonzalez@eduprizeschools.net

ATHLETIC DEPARTMENT

Upcoming Week Sports Schedule At A Glance:

Please note dates and times for each sport's parent meeting. Important information will be given at each meeting as well as each sport's game schedule.

VOLLEYBALL PRACTICES THIS WEEK:

Varsity and JV: Monday - Thursday 3:30- 5:00 PM in B4 Gym
Junior High A- Monday & Wednesday 3:30 - 5:30 PM in B3 Gym
Junior High B- Monday & Wednesday 3:30 - 4:45 PM in B3 Gym
Elementary - Tuesday & Thursday 3:10 - 4:30 in B3 Gym

Volleyball Game Schedule

Junior High B- Tuesday 5:30 in B4 Gym
Junior High A- Thursday 5pm at Basis Mesa (Scrimmage)
Varsity- Thursday 5pm at Basis Mesa (Scrimmage)

FLAG FOOTBALL: Parent Meeting will be held on **TUESDAY, AUGUST 15th 3:30 in B4 Foyer. Then athletes will take concussion assessment.**

FOOTBALL:

PRACTICE SCHEDULE: Tuesday, Wednesday and Thursday 6am - 7:10 am

BASEBALL: Season has been cancelled due to not enough players interested

SOCCER:

PRACTICE SCHEDULE: Monday, Tuesday and Thursday 3:30 - 5PM

CROSS COUNTRY is open to all students 5th-12th grade.

First practice will be held on Weds, August 16th from 6:00 AM - 7AM.

Please have all paperwork completed before tryouts. ALL FORMS need to be signed, completely filled out and dropped off **OR** emailed to Traci Smith in B4 to participate in tryouts. You can email paperwork to her at traci.smith@eduprizeschools.net. **NO EXCEPTIONS!** You can find all forms listed here:

<https://www.eduprizeschools.net/gilbert-sports-and-extracurricular-activities/>

Make sure you bring proper attire and plenty of water for tryouts

If you have any questions please email the Athletic Director
Clint.ambos@eduprizeschools.net



IB Schedules

Juniors, if you are interested in being a diploma candidate you need to have an IB art (we offer visual art and music) and a foreign language (we offer Mandarin and Spanish).

Diploma vs. Course

Students can choose to try to earn an IB Diploma which includes completing the following IB courses—IB English, an IB foreign language, IB History, IB Math: Analysis and Approaches, IB Biology and IB art (visual or music). In addition to these courses, students will also need to complete and pass Theory of Knowledge, Extended Essay, and CAS (this is the service learning component of the diploma). Students can also choose to take singleton IB courses and just test in those areas. For example, a student may be very strong in math and science, so they could choose to just take an exam in those two areas. EDUPRIZE offers both options.

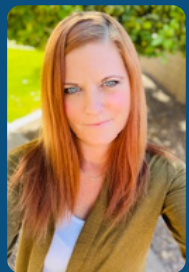
NAU Scholarships

Many of my former and current students have taken advantage of the several fantastic scholarship opportunities that NAU offers; check out this link to learn more <https://nav.edu/office-of-scholarships-and-financial-aid/freshman-merit-based-tuition-scholarships/>

REGISTRATION

Registration will be happening in September, so sure to ask exam-related questions before then. I'll be talking with the IB students to make sure they are on track with their goals, so if you aren't sure if you want to test or in what subject, please email me. Each exam is 119 and you will pay through Infinite Campus—more to come on that.

Amy Smith
amy.smith@eduprizeschools.net



Amy Smith
IB Director



Join



Are you interested in playing a lead role at our school for students in PK-12th grade?

We are looking to fill 3 PTN Board Positions for this year.

PTN stands for Parent Teacher Network and it is a volunteer role that shares and supports the vision/goals of the school to improve education, health and safety of all children.

Our current PTN Board has been amazing and we are looking for a strong partnership to continue the great activities that bring our EDUPRIZE community together. To see more of the responsibilities of our amazing PTN click this [link](#).

We are looking for people that are interested in filling PTN Board positions for the 2023/2024 school year. In person interviews will be conducted on Friday, August 18th between 10:30 am and 12:00 pm. If you are interested, please complete this [form](#).

Kindly,
Principals Yeargain and Murphy

2023-2024

L.I.F.E. FUND DUE

LIFE Funds are due September 1st, 2023 in order for students to participate in their class field trips this school year. If you have not already done so, please pay LIFE Funds through you Infinite Campus parent portal.

Lab Instructional Field Experiences (L.I.F.E.) provides special opportunities and presentations on and off campus. We aim to bring the highest quality of experiences, therefore, L.I.F.E. Fund fees are used to cover the cost. Please click on the instructions below on how to pay this fee via your parent portal.

[Click Here
for instructions
on how to make
payments via
Infinite Campus](#)

[Infinite
Campus
Portal](#)

Click on "School Store" in the menu

HONORING OUTSTANDING ARIZONA TEACHERS

3

SILVER
APPLE



Nominate your teacher

for the Silver Apple Award.

NOMINATIONS ARE ACCEPTED THROUGH MARCH 15, 2024

Silver Apple
Award
Rules

There is no doubt that EDUPRIZE has some of the most outstanding teachers in the state! The 2023-2024 Silver Apple Award is a local teacher recognition program, sponsored by Channel 3 News and Arizona Bank & Trust. Eight nominated teachers are rewarded each year with a feature on 3TV and special prizes. The nominations are completed by students and signed by the principal. You can print an application [here](#).

Silver Apple
Award
Nomination
Form

In years past, we have had three Silver Apple Award winners at EDUPRIZE! If this award does not sound like the perfect recognition program, please take a look on the internet for other programs honoring educators. In addition, [greatschools.org](https://www.greatschools.org) is a great place to share your support for your child's teacher and the school!

Orchestra and Band Grades 5 and 6

It is not too late to join!

Orchestra:

Monday/Thursday - Beginner

Wednesday/Friday - Intermediate
(played previously)

7:00 - 7:40 A.M.

Questions?

jill.osborne@eduprizeschools.net

Band:

Monday - Beginning woodwinds

Wednesday Beginning brass and
percussion

Friday - All beginners

Tuesday/Thursday - All
intermediate (played previously)

7:00 - 7:40 A.M.

Questions?

michael.hall@eduprizeschools.net



[Band/Orchestra Sign-up Link](#)

Health Office Updates



IMPORTANT HEALTH OFFICE INFORMATION

As illness or health situations occur throughout the school year, it may be necessary for medication to be administered at school. All prescribed AND over the counter medication (i.e. Tylenol, Ibuprofen, Benadryl, etc.) will need to be checked into the Health Office, along with a [Prescription and Non-prescription Medication Consent](#) form which requires a doctor's signature. These forms can be found on our website www.eduprizeschools.net under the Parent & Student Resources>Health Office Forms, or you can just click on any of the links provided in light blue.

- HEALTH ACTION PLAN: Please be aware that children who have asthma, diabetes, or seizures will need an action plan provided by their health care provider, ALONG with the signed [Prescription and Non-prescription Medication Consent](#) form .
- ASTHMA: If your child has asthma, an asthma action plan will need to be provided by your doctor ALONG with a signed [Prescription and Non-prescription Medication Consent](#) form .
- ALLERGIES: Allergies that require an EpiPen will need an [Anaphylaxis Management Packet](#) filled out and signed by a doctor along with the [Prescription and Non-prescription Medication Consent](#) form .
- MEDICATION: As a reminder, ALL medications need to be checked in at the Health Office. Students should not carry medications in their backpacks. A [Prescription and Non-prescription Medication Consent](#) form will also need to be filled out for any medications, prescription or non prescription.

We cannot accept ANY medications without these forms.

Any questions can be directed to the Health Office staff at (480) 813-9537 option 7

Medication Authorization

If you would like your student to be able to access medication at school, please complete the authorization [FORM](#) and return to the health office.



Give us a Review!



Hey everyone!

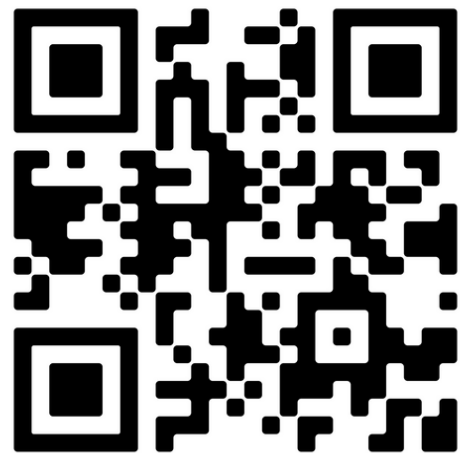
Positive reviews from awesome parents like you help other parents just like you to feel confident about choosing EDUPRIZE. Could you take 60 seconds and share your happy experiences?

We will be forever grateful. Thank you in advance for helping us out!

Use the QR Codes to write a review
for EDUPRIZE Schools on
Niche.com and Greatschools.org



Niche.com



Submit a Review

Campus Students & Campus Parents

Logging into the App

1. Download the app at the [App Store](#) or [Google Play](#).
2. Search for your District Name (Eduprize) and State. Select your district from the list.
3. Enter your Username and Password. (If you haven't create an account, please email: april.talley@eduprizeschools.net)
4. Click Log In!

Logging in from a Web Browser

1. Visit <https://eduprizeaz.infinitecampus.org/campus/portal/parents/eduprize.jsp>
2. Enter your Username and Password. (If you haven't create an account, please email: april.talley@eduprizeschools.net)
3. Click Log In!





COME AND JOIN OUR AIDE STAFF !

LOOKING FOR HARD WORKING PEOPLE WHO LOVE SAFETY AND WORKING WITH KIDS!

TIMES NEEDED ARE:

7:00-8:05 A.M.

10:20 A.M.-1:10 P.M.

2:30-3:40 P.M.

**-GREAT FOR STAY AT HOME PARENTS, RETIREES AND COLLEGE STUDENTS
OVER 21 YEARS OR OLDER.**

- WE ARE VERY FLEXIBLE WITH SCHEDULES.

- FRIENDLY ENVIRONMENT

JOB TYPE: PART-TIME 19HRS A WEEK

IF INTERESTED PLEASE CONTACT:

TYM BRITTON

AIDE SUPERVISOR

CAR LANE COORDINATOR

LUNCH PROGRAM COORDINATOR

EDUPRIZE GILBERT

PHONE: (480) 813-9537 EXT.1270

EMAIL: TYM.BRITTON@EDUPRIZESCHOOLS.NET



NOW HIRING

SUBSTITUTES

We offer:

Competitive pay - \$20.75/hour (teacher certified)
\$19.50/hour (sub certified)
\$17/hour (no certification)

Flexible Schedules - Traditional day and AM/PM TOPS

Range of Classes - Grades PreK-12th grade and specialty classes like dance, PE, computers, and much more.

Incredible Community - Our staff, students, and parents are a welcoming and loving community you will enjoy being apart of.

IF INTERESTED PLEASE EMAIL

emily.yeaman@eduprizeschools.net



Website

Our webpage contains important information such as parent notices, dates of our Board meetings and budgets, and important ECA programs and tax credit information.

Resumés

Resumé information for all instructional staff is available in the administration office.

Free and Reduced Lunch/Every Student Succeeds Act

EDUPRIZE does not participate in the official National School Lunch Program. A reduction of 10% is offered to parents who meet the Federal Income Guidelines at the Gilbert campus. Applications are available at the Front Desk of all buildings.

Board of Directors Meeting

Board of Directors meetings are generally held every month and the date, location and times are posted on our website. Meeting agenda is posted on the business bulletin board on site and on line on the school website.

<https://www.eduprizeschools.net/board-2/>

Equal Employment/Enrollment Opportunities

EDUPRIZE provides equal opportunity to all employees and enrolled students and is not biased regarding race, gender, ethnicity, religion, national origin, language proficiency or disability.

Open Enrollment

EDUPRIZE ensures that it complies with all open enrollment requirements per state law. EDUPRIZE uses a lottery system for filling openings and no tuition is required.

Political Activities

EDUPRIZE ensures that it does not use its forum or student base to promote any political activities or position

EL Information

Arizona is a very diverse state with many different cultures and languages. EDUPRIZE is no different, we have about 100 students that have a language other than English within the home. The languages represented include Spanish, German, Russian, Serbian, French, Arabic, Urdu, Korean and Cantonese, to name a few.

Any student that has another language, either spoken at home or by the student, must take a proficiency exam in English. Students who do not test proficient in English are called ELs, or English Learners. These students qualify for extra help during the day to improve English fluency. EDUPRIZE uses 2 different models of instruction, both include SEI (Structured English Immersion) endorsed teachers using English Language Proficiency (ELP) standards. In K-6th grade, we have a 2 hour SEI model, where students remain in their classroom and the teacher uses SEI strategies to increase English language proficiency.

This model will focus on Reading, Writing, Listening, Speaking and Grammar standards that are incorporated within the classroom instruction and small group lessons. In the 7-12th grades, students are in a pull-out program with an SEI endorsed teacher that provides 50 minutes of focused English instruction to EL students. Both programs use ELD (English Language Development) as well as ELP standards that tie the English language objectives to content instruction. Students are monitored in their English fluency progression each quarter and then are reassessed in Quarter 3 through a state test called the AZELLA-Arizona English Language Learner Assessment. As always, EDUPRIZE teachers do a remarkable job on helping our ELs increase their English proficiency each year.

